



1013/443 Upper Heidelberg Road Ivanhoe, VIC

 1
  1
  1

First Class Finishes. Beautiful Views

Set within the impressive Fender Katsalidis Ivanhoe Apartments tower, this impressive apartment offers an inspired design, quality fixtures, fittings, and finishes, and a view of the distant ranges that is superb by day and stunning by night!

Large and light-filled, the living area extends from a kitchen appointed with stone tops, soft-close cabinetry, and premium appliances through sliding glass doors to a generous balcony. Providing a fabulous outdoor entertaining area against a backdrop of twinkling lights when night falls, it delivers space to relax during the day!

Complementing the living spaces is a generous bedroom served by a deluxe, fully tiled bathroom. Resident's amenities include a heated lap pool, gym, private rooftop lounge and dining spaces with a kitchen, a games room and a communal BBQ set in manicured gardens. A short walk to The Austin-Mercy Hospital precinct, and vibrant Burgundy Street's its dining, latte and shopping options along with the station; it is minutes from Ivanhoe Village.

Price: \$385,000

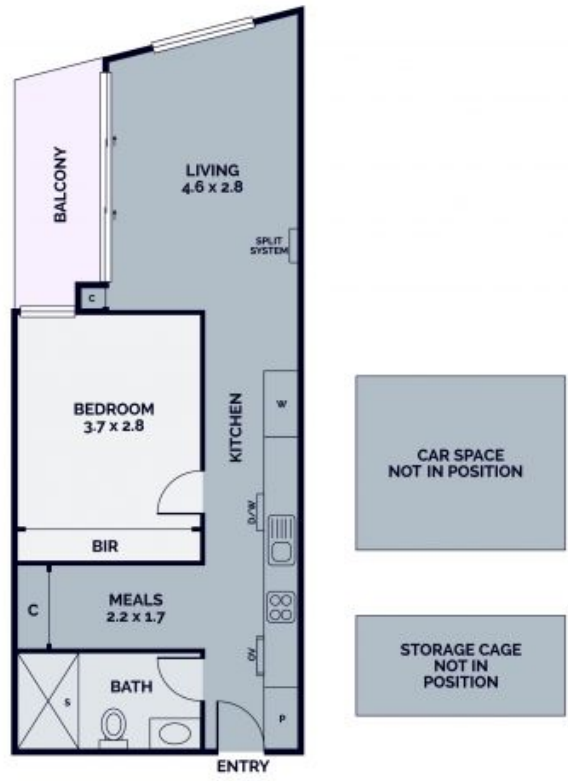


Jessica Wat

0422 881 301
jessica.w@lovere.com.au

Jim Stamatis

0412 778 001
jim.s@lovere.com.au



Every precaution has been taken to establish accuracy of the information in this brochure but does not constitute any representation by the vendor or agent.



1013/443 Upper Heidelberg Road Ivanhoe, VIC