



12 Speckled Street Epping, VIC

4 2 2

Excellent Family Living on 562sqm

A sought after blend of location, lifestyle and contemporary layout, this generously proportioned home has everything you need for functional family living. Sprawling interior spaces include a stone kitchen with stainless steel appliances, generous open plan living/family meals area, spacious formal lounge area and four bedrooms served by two spacious bathrooms and a separate powder room. An easy walk to the Aurora Village, acres of parklands and Harvest Home Primary school, it sets the scene for fantastic living and lifestyle choices.

- ? Positioned in the sought after Aurora Estate
- ? Ducted heating and evaporative cooling
- ? Double garage (internal access)
- ? Huge rear yard with covered entertaining area
- ? 563sqm block

Price: \$790,000 - \$865,000



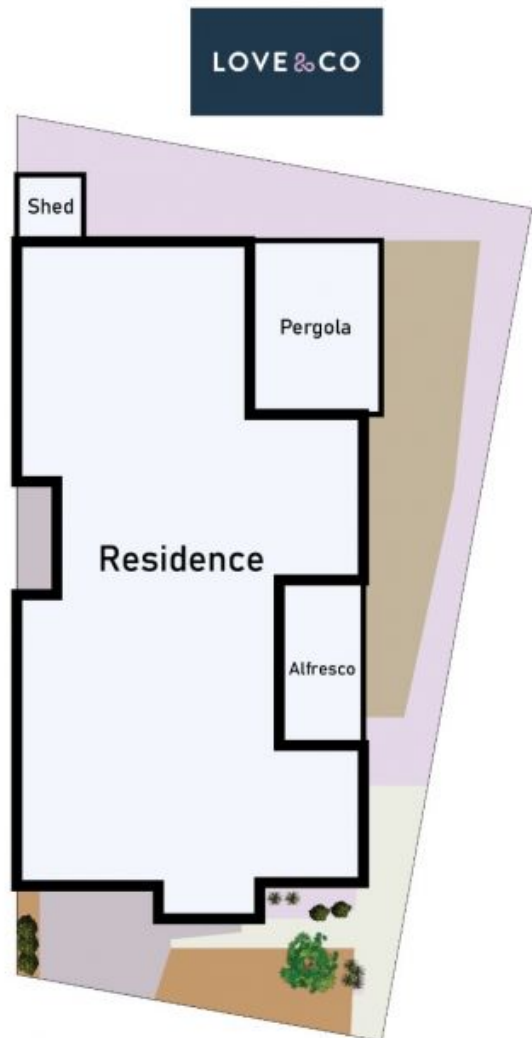
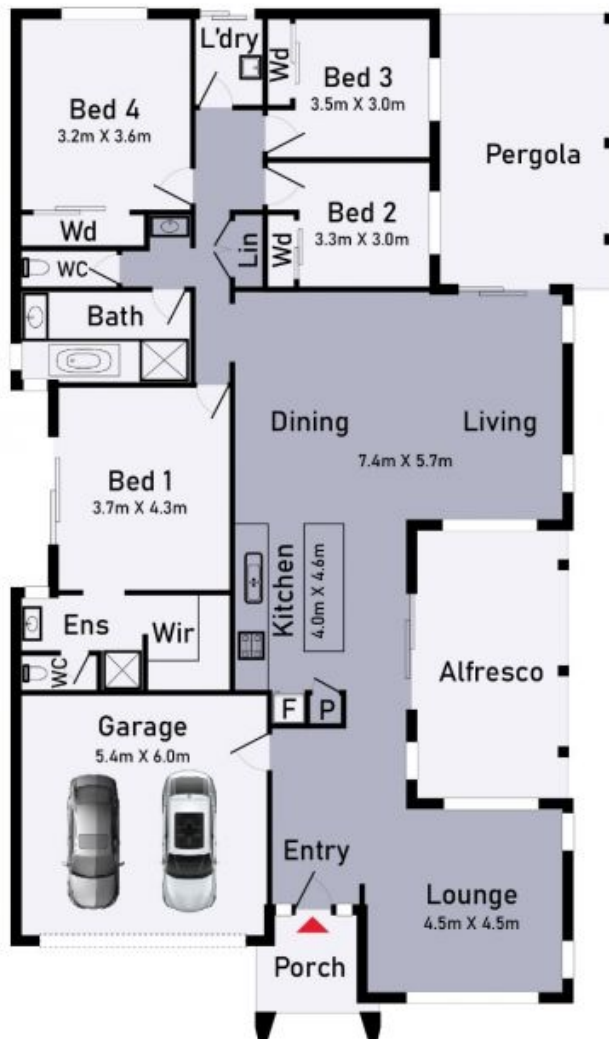
John Gioftsdis

0410 522 195
john.g@lovere.com.au



Roger Pettinella

0418 588 419
roger.p@lovere.com.au



12 Speckled Street, Epping

* Dimensions are approximate and for illustrative purposes only



LOVE & CO

12 Speckled Street

Epping, VIC