



1A Elaine Close Epping, VIC



Central Standalone Charm

Discover the charm of this standalone two-bedroom home, perfectly positioned in a highly sought-after central location. With its own street frontage and no owner's corporation fees, this property offers a unique level of privacy and independence.

Step inside to find a freshly painted interior with brand-new carpets in both bedrooms, each featuring built-in robes for ample storage. The living area boasts soaring cathedral ceilings, creating an airy and spacious feel, while the tiled meals area connects seamlessly to a well-appointed kitchen. A central bathroom with a full-size bath completes the practical layout, ensuring comfort and convenience for everyday living.

Outdoors, enjoy the generous backyard with room for relaxation, gardening, or entertaining, plus a handy shed for extra storage and a single garage. This home is not only stylish but also incredibly convenient—just a short walk to the station, Pacific Epping, Dalton Village, and nearby schools.

Price: \$500,000 - \$550,000
Inspect: Saturday, 9th November 2024 1:15 - 1:45
 Monday, 11th November 2024 5:00 - 5:30
Auction: 2024-11-30
Details: 10:30:00

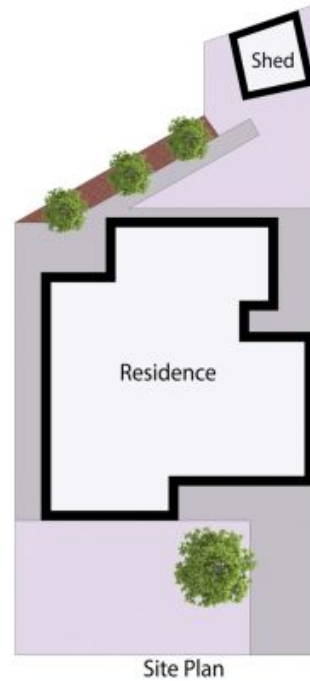
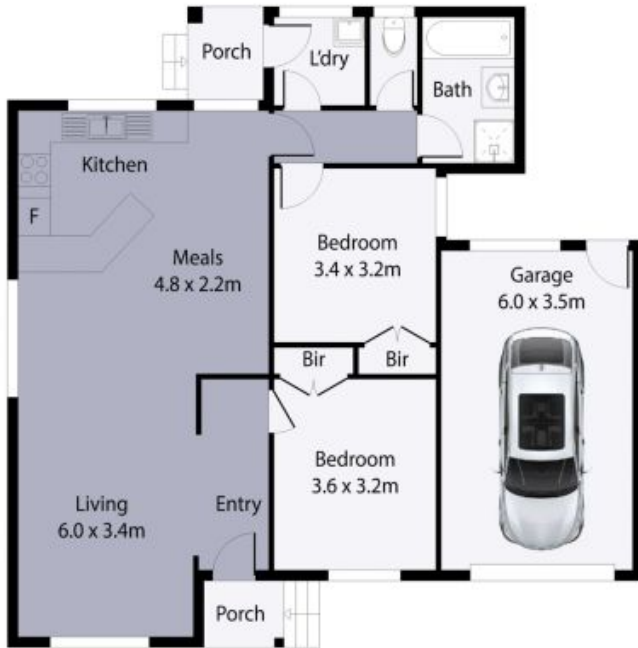


Jim Kalakias
 0402 177 336
 jim.k@lovere.com.au



Ibby Zayat
 0412 469 545
 ibby.z@lovere.com.au

1A Elaine Close, Epping



THE ABOVE PLAN IS AN ARTIST'S IMPRESSION ONLY, IT INCLUDES ELEMENTS THAT ARE FOR DISPLAY PURPOSES ONLY AND MAY NOT BE TO SCALE. LANDSCAPING SHOWN IS INDICATIVE ONLY. DIMENSIONS ARE APPROXIMATE.

