



1/2 Guila Court Epping, VIC

 2
  1
  1

## Classic Charm, Endless Potential

This well-maintained 2-bedroom unit, in its original condition, offers a unique opportunity for first-home buyers, renovators, or investors looking to create their dream space. Boasting street frontage and a practical layout, this home provides a solid foundation for those seeking comfort and convenience.

Inside, the spacious living area features a gas wall heater, perfect for cozying up during cooler months. The adjoining kitchen and dining area, though in original condition, offers plenty of potential for modern updates, or can be enjoyed as it is. Two generously sized bedrooms share a central bathroom, maintaining the classic feel of the home.

A single garage ensures secure parking, while the low-maintenance outdoor space presents an easy-care lifestyle or a blank canvas for those with creative landscaping ideas.

**Price:** \$475,000 - \$520,000  
**Inspect:** Tuesday, 8th October 2024 5:00 - 5:30  
**Auction:** 2024-10-26  
**Details:** 11:00:00



**Jim Kalakias**

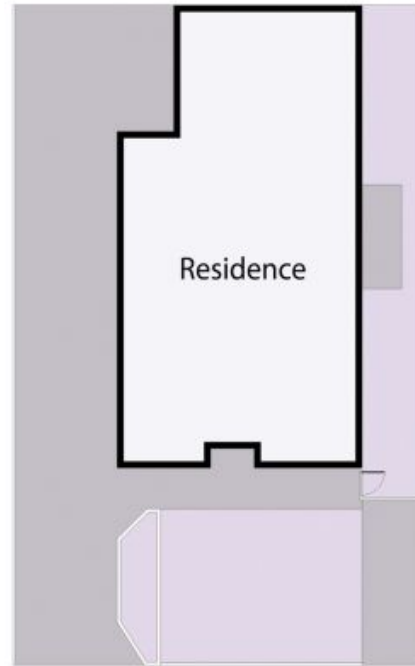
0402 177 336  
jim.k@lovere.com.au



**Ibby Zayat**

0412 469 545  
ibby.z@lovere.com.au

# 1/2 Guila Court, Epping



Site Plan

THE ABOVE PLAN IS AN ARTIST'S IMPRESSION ONLY, IT INCLUDES ELEMENTS THAT ARE FOR DISPLAY PURPOSES ONLY AND MAY NOT BE TO SCALE. LANDSCAPING SHOWN IS INDICATIVE ONLY. DIMENSIONS ARE APPROXIMATE.

