



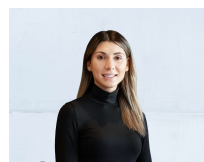
506/812 Sydney Road Brunswick, VIC



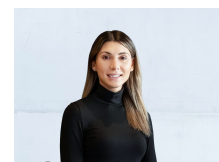
Bright and Spacious 2-Bedroom Apartment in Prime Location

This stunning 2-bedroom, 2-bathroom apartment offers a perfect combination of modern design and unbeatable location. Bathed in natural light, the apartment features sleek timber flooring throughout, with two spacious bedrooms boasting mirrored built-in robes and plush carpeting. The master bedroom overlooks a large balcony, which offers sweeping city views-perfect for unwinding or entertaining. The stylish kitchen is fully equipped with stainless steel appliances, including a dishwasher and inbuilt fridge, along with generous bench and storage space. The open-plan living area extends seamlessly to the balcony, creating a bright and airy atmosphere. Two well-appointed bathrooms, a Euro laundry, split system heating and cooling, as well as the convenience of an underground car park with 2 parking spots, intercom security, and same-level storage case, complete this exceptional home. Ideally located on Sydney Road, with cafes, shops, and public transport at your doorstep, this apartment offers both luxury and lifestyle in the heart of Brunswick.

Price: \$650 Per Week



Victoria Tsonis



Victoria Tsonis

inspections.thornbury@lovere.com.au inspections.thornbury@lovere.com.au