



19 Lucknow Drive Beveridge, VIC



4



2



2

Family Living in Mandalay Estate

This beautifully crafted residence exudes timeless charm and promises a life of unparalleled comfort and convenience in one of Beveridge's great locations offering an excellent opportunity where you will find four generous sized bedrooms, master bedroom complete with ensuite and walk in robe, built in robes to remaining bedrooms as well as a fully equipped kitchen overlooking a spacious open plan family and dining room.

The home features quality stone benchtops, stainless steel cook top, oven and dishwasher, large pantry, internal garage access and separate living areas.

Additional highlights and creature comforts include plantation shutters, ducted heating, evaporative cooling and remote double car garage.

Nestled in one of Beveridge's prestigious estates with premium amenities to utilise such as Peter Thompson designed 18 hole golf course, pool, tennis, impressive gym and club house dining. As well as numerous walking and cycling trails, recreation parks and reserves for those who love to do activities on the weekend. With close proximity to Beveridge

Price: \$600,000 - \$660,000
Inspect:
Auction: 2024-10-05
Details: 10:30:00



Bijan Rahimi

0451 515 301
 bijan.r@lovere.com.au



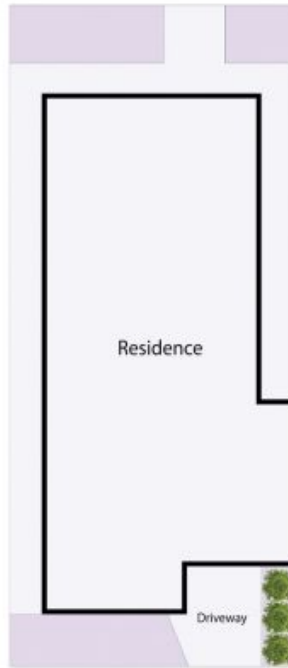
Ibby Zayat

0412 469 545
 ibby.z@lovere.com.au

19 Lucknow Drive, Beveridge



Floor Plan



Site Plan

THE ABOVE PLAN IS AN ARTIST'S IMPRESSION ONLY, IT INCLUDES ELEMENTS THAT ARE FOR DISPLAY PURPOSES ONLY AND MAY NOT BE TO SCALE. LANDSCAPING SHOWN IS INDICATIVE ONLY. DIMENSIONS ARE APPROXIMATE.

