

8 Warne Grove Epping, VIC



4



2



2

Elegance, Space & Entertainment

Gracefully elevated, enhanced by period detail with bay style front lounge, timber floors, coffered entrance ceiling, this spacious home delivers fabulous family living behind a classically captivating facade. Four bedrooms plus study delivering a wealth of living space and incredibly large pergola entertainment. Every detail of this residence showcases quality from the floors, cabinetry and new carpets all has been impeccably finished and maintained to create a beautiful designer home.

The open plan living featuring the wood fire Coonara and island bench, oversees the living and dining domains with seamless access to an all-weather spacious decked pergola with room for barbecue facilities.

Master bedroom showcasing a full ensuite with remaining lavish bedrooms featuring robes complemented by the main bathroom through a quiet hallway. Full Heating/cooling throughout, endless storage, Double-car garage, outdoor shed and enough space to store your caravan and boat.

Price: \$950,000 - \$990,000



Jim Kalakias

0402 177 336

jim.k@lovere.com.au



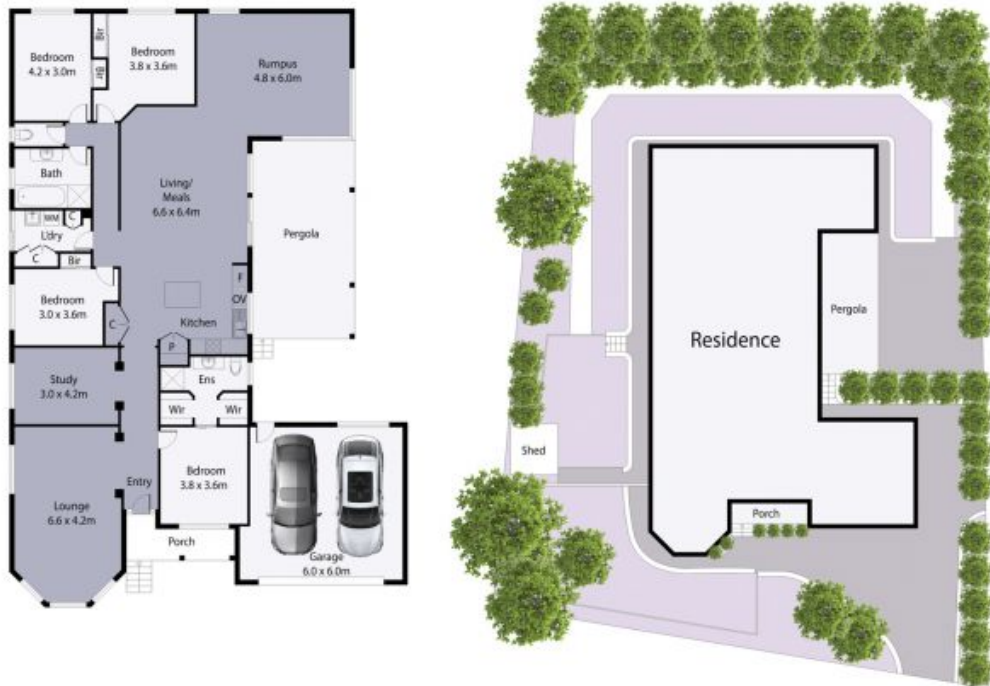
Bijan Rahimi

0451 515 301

bijan.r@lovere.com.au

8 Warne Grove, Epping

LOVE & CO



THE ABOVE PLAN IS AN ARTIST'S IMPRESSION ONLY, IT INCLUDES ELEMENTS THAT ARE FOR DISPLAY PURPOSES ONLY AND MAY NOT BE TO SCALE. LANDSCAPING SHOWN IS INDICATIVE ONLY. DIMENSIONS ARE APPROXIMATE.



LOVE & CO

8 Warne Grove

Epping, VIC