

105/42 Rufus Street Epping, VIC

2 1 1

## Delightful and Secure!

This lovely 2 bedroom apartment comprises:

- 2 bedrooms, both with wardrobes
- Central bathroom
- Sun filled kitchen and living
- Private balcony
- Secure under cover lock up garage
- Storage cage
- Lift access
- Freshly painted

In close proximity to schools, The Northern Hospital, Epping train station and Costco/Epping Plaza

**Price:** \$430 Per Week

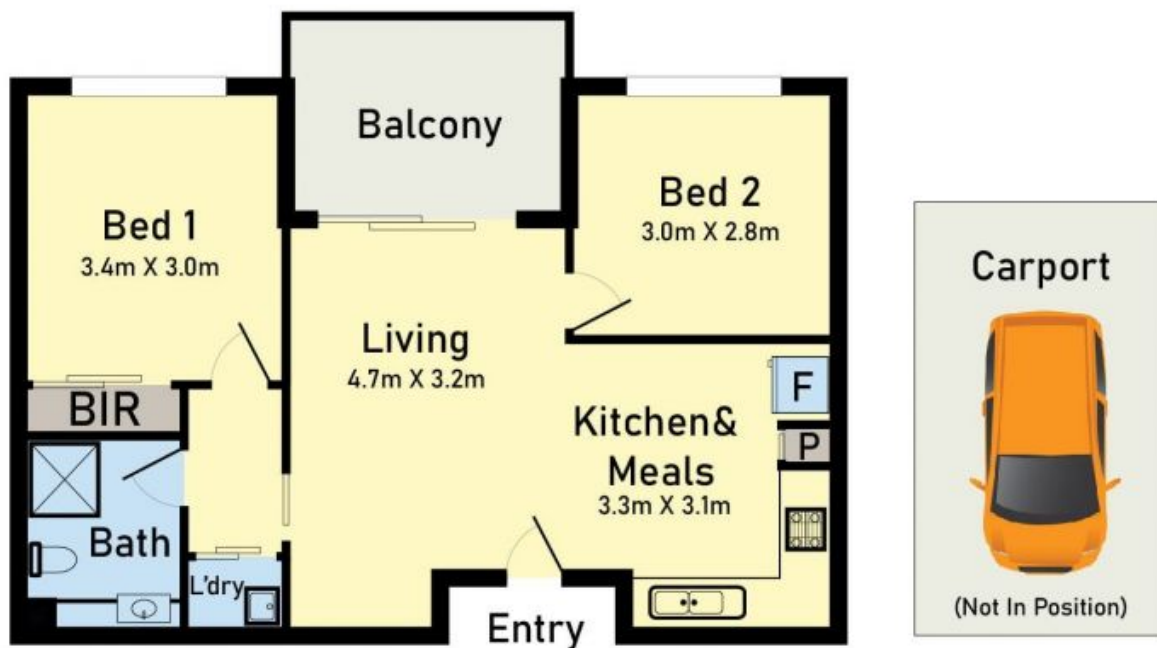


**Rachael Kopp**



**Rachael Kopp**

lovemillpark@mail.inspectrealest lovemillpark@mail.inspectrealest



## 105/42 Rufus Street Epping

\* Dimensions are approximate and for illustrative purposes only



LOVE & CO

105/42 Rufus Street

Epping, VIC