

Under Application

Love&Co Epping



1/17 Sorrento Place Epping, VIC



2



2



1

CONVENIENCE RIGHT AT YOUR DOORSTEP

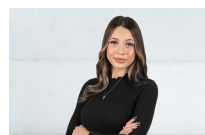
Tucked away in a private cul-de-sac, this home provides a tranquil haven, all while being close to parks, schools and shopping centres with only a short drive.

Featuring two bedrooms, the main of which has a walk-in robe and an ensuite bathroom, providing plenty of storage along with the second bedroom complemented by its own bathroom, complete with a bath.

Last, but not least this home offers a separate lounge, moving through to the dining/living area, which is well linked with the kitchen to create the perfect setting for social events and daily living plus comfort all year round with ducted heating.

Finally, step outside to a generously sized backyard, equipped with a single car garage.

Price: \$470 per week



Alicena Vocale

loveepping@mail.inspectrealestat