



4 Eva Place Epping, VIC

 3
  2
  3

Family-Friendly Neighbourhood

Nestled in a serene cul-de-sac and adjacent to the Lowalde Recreation Reserve, this solid brick home offers an exceptional opportunity for young families, investors, or developers seeking a small project, with the potential to add another dwelling in the backyard (STCA), making this property both a comfortable residence and a smart investment.

The home features three well-sized bedrooms, each fitted with built-in robes for ample storage, the master bedroom includes a semi-ensuite ensuring privacy and convenience, and a central bathroom with a bath serves the remaining bedrooms. The large lounge/living room provides a welcoming space for relaxation, while the separate meals area and well-appointed kitchen, which overlooks the pergola, make family dining and entertaining a delight.

Price: \$678,000



Jim Kalakias

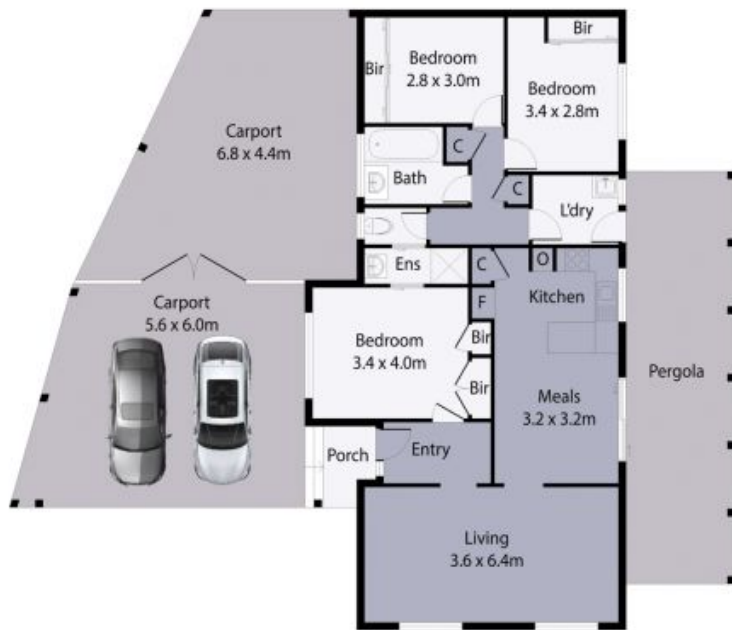
0402 177 336
jim.k@lovere.com.au



Ibby Zayat

0412 469 545
ibby.z@lovere.com.au

4 Eva Place, Epping



Site Plan

THE ABOVE PLAN IS AN ARTIST'S IMPRESSION ONLY, IT INCLUDES ELEMENTS THAT ARE FOR DISPLAY PURPOSES ONLY AND MAY NOT BE TO SCALE. LANDSCAPING SHOWN IS INDICATIVE ONLY. DIMENSIONS ARE APPROXIMATE.

