



1/19 Balmain Court Lalor, VIC

2 1 1

QUIET COURT LOCATION

This modern unit sits at the end of a quiet residential bowl court in the heart of Lalor. Situated right next door to a family friendly playground and beautiful natural scenery park lands. 2 good sized bedrooms, main bathroom, European laundry, bright kitchen with stainless steel appliances overlooking an open plan meals and living area that leads out to the low maintenance courtyard neat and tidy. Also offering split system heating/cooling, a carport for your car and garden shed.

With all the benefits of an established neighbourhood surrounded by transport, you are walking distance to parks, sporting grounds, schools, shops and public transport: 10 min walk or 3 min drive to Lalor train station, 1 minute walk to bus stop which will take you to Thomastown station. Only a short drive to Northern Hospital, Epping Plaza, Costco and easy freeway access.

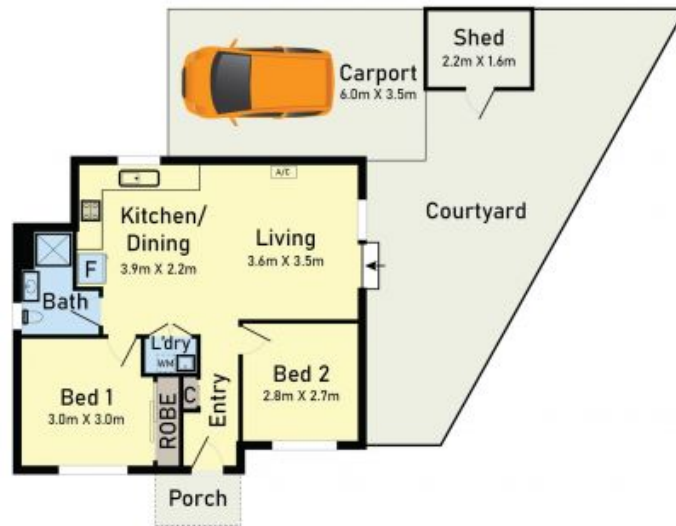
Inspection will not disappoint highly recommended schools and transport near by.

Price: \$450 Per Week



Nikki Vo

nikki.v@lovere.com.au



1/19 Balmain Court, Lalor

* Dimensions are approximate and for illustrative purposes only

