



Shop 23-25/314 Childs Road Mill Park, VIC

## FULLY FITTED HIGH PROFILE OFFICE

Surrounded by Schools, Sporting and Medical Facilities, The Stables Shopping Centre is an established shopping precinct anchored by major retailers such as Woolworths, BWS and a host of food/entertainment options.

- Total Building Area: 189SQM (approx.)
- Superbly fitted office with data cabling throughout
- Flexible layout with a mix of portioned office spaces, reception area, boardrooms, meeting rooms, kitchenette, storage options and open plan space
- Multiple access points.
- Heating and cooling throughout
- Excellent customer parking
- Attractive lease terms.

**Council Rates:** \$0.00

**Water Rates:** \$0.00

**Strata Rates:** \$0.00



**Graham Love**

0418 534 450

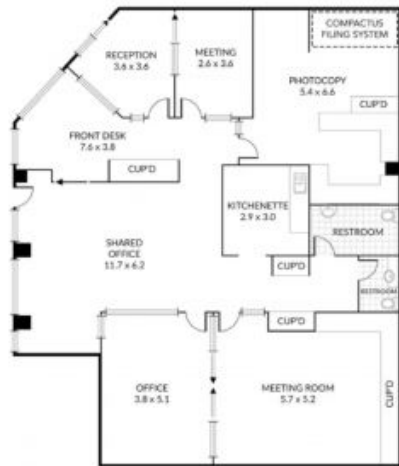
graham.l@lovere.com.au



**Branko Agatanovic**

0448 035 565

branko.a@lovere.com.au



NOTE: Every precaution has been taken to verify the accuracy of the above details. However, prospective purchasers are advised to make their own enquiries.