



3/7-9 Mitchell Street Brunswick, VIC



2



1



1

The Perfect Mix Of Living, Location And Lifestyle

Open for inspections at an advertised time, can take place with density limits and a cap of 30 people indoors. All attendees must be fully vaccinated, must check in using the Service Victoria app and will be requested provide proof of vaccination at check in.

People who are not fully vaccinated or do not want to reveal their vaccination status need to contact the agent to organize a way to inspect the property.

Whether you are looking to live in or let out, this two-bedroom home should be high on your 'must-see' list. Tucked away in a boutique block on a quiet street, it is located for lifestyle footsteps to the cafes, shopping, dining bars and eateries on and around Sydney Road, moments to tram routes and a short walk to Anstey Station. Zoned over two levels, the generously proportioned interior introduces a spacious living area that glides through to a kitchen-meals, which in turn opens to a rear courtyard to create a fabulous free-flowing mix for indoor-outdoor enjoyment. First floor spaces include a central bathroom serving the two bedrooms, one boasting a balcony perfect for a relaxing coffee and the news-feeds. Matching the proportions and position is the potential to reap the rewards of cosmetic upgrades over time!

Price: SOLD - \$755,000

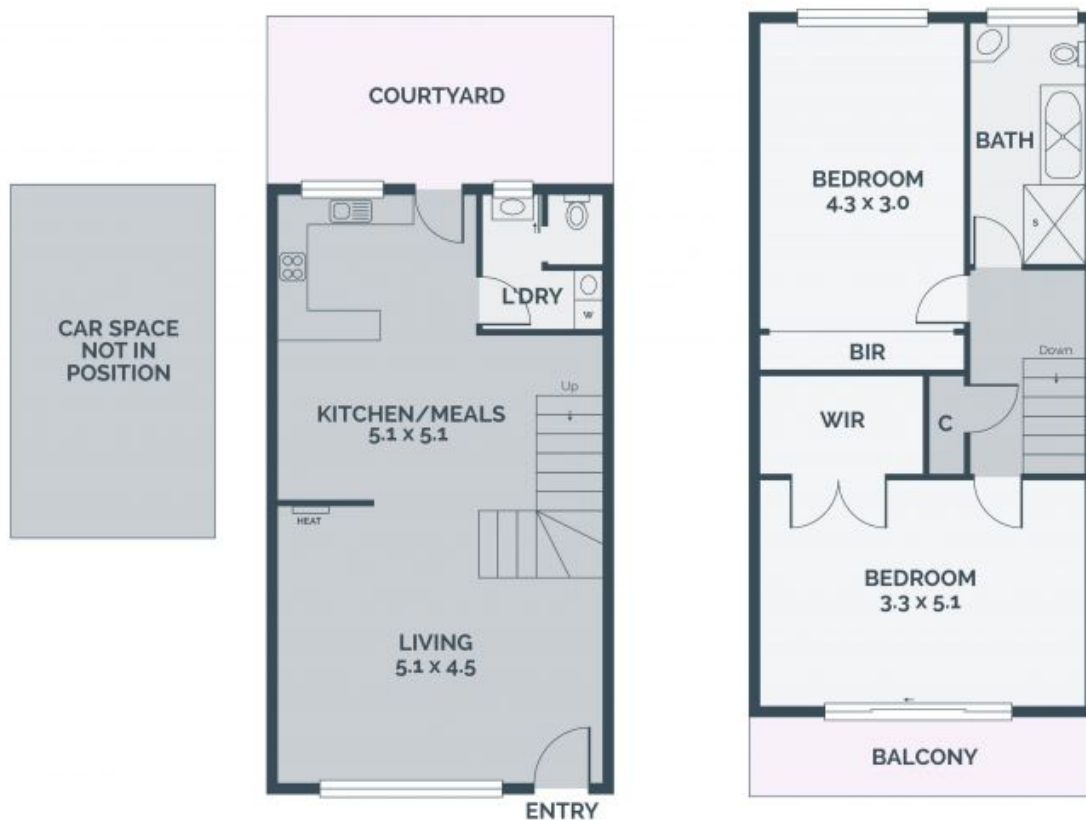


Kannan Subramanian

0411 711 232
kannan.s@lovere.com.au

Graham Love

0418 534 450
graham.l@lovere.com.au



Every precaution has been taken to establish accuracy of the information in this brochure but does not constitute any representation by the vendor or agent.

3/7-9 Mitchell Street

Brunswick, VIC

LOVE & CO