



35 Swanston Street Heidelberg Heights, VIC

 2
  1
  2

## Perfectly Presented. Move Straight In!

Open for inspections at an advertised time, can take place with density limits and a cap of 30 people indoors. All attendees must be fully vaccinated, must check in using the Service Victoria app and will be requested provide proof of vaccination at check in.

People who are not fully vaccinated or do not want to reveal their vaccination status need to contact the agent to organize a way to inspect the property.

Overflowing with appeal for owner-occupiers or investors, this renovated home tucked away behind a picket fence and pretty gardens is absolutely as neat as a pin and has nothing left to do; just enjoy! Two bedrooms, one opening directly to an updated pristine family bathroom finished with floor to ceiling tiles, complement a spacious lounge flowing through to the family meals. Light-filled and with a relaxing garden outlook, it stretches out from a kitchen featuring plenty of preparation and storage options and showcasing stainless steel appliances against a timeless black and white tiled splashback. Central to Northland, Heidelberg and the Hospital precinct, it enjoys the bonus of secure gated parking for up to 6 cars!

**Price:** SOLD - \$815,000



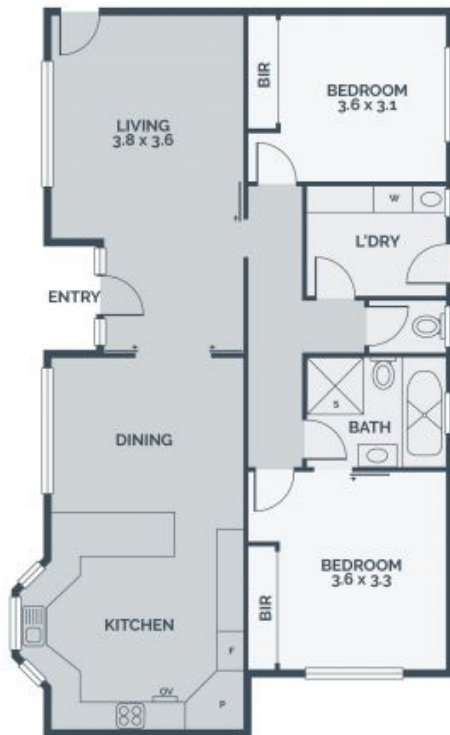
**Graham Love**

0418 534 450  
graham.l@lovere.com.au



**Graham Love**

0418 534 450  
graham.l@lovere.com.au



Every precaution has been taken to establish accuracy of the information in this brochure but does not constitute any representation by the vendor or agent.

**LOVE & CO**

**35 Swanston Street**

**Heidelberg Heights, VIC**