



1 Prime Street Thomastown, VIC

Prime Main Road Investment

546 SQM (approx) of prime position fronting onto busy Settlement Road. This property is sure to appeal to a variety of potential purchasers including owner occupiers and investors.

- * First class office and amenities of 328SQM (approx)
- * 218 SQM (approx.) of high clearance warehouse area
- * Electric roller door access
- * Zoned industrial 1
- * Showroom potential
- * Large Carpark

Due diligence checklist - for home and residential property buyers
<http://www.consumer.vic.gov.au/duediligencechecklist>

Price: SOLD - \$ 1,250,000

Council Rates: \$0.00 p/q

Water Rates: \$0.00 p/q

Strata Rates: \$0.00 p/q



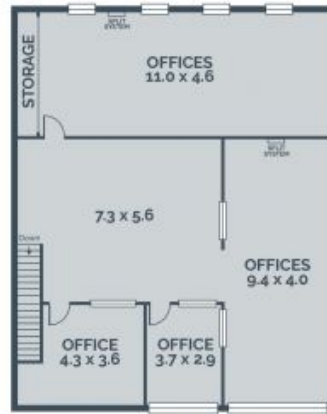
Michael Sabelberg

0450 554 317
 michael.s@lovere.com.au



Graham Love

0418 534 450
 graham.l@lovere.com.au



Every precaution has been taken to establish accuracy of the information in this brochure but does not constitute any representation by the vendor or agent.