

36B Lipton Drive Thomastown, VIC

AS NEW WAREHOUSE / OFFICE

- * 274m² (approx) warehouse & 31m² (approx) Mezzanine Office
- * Air conditioned
- * Excellent Amenities included
- * Electric Container Height Roller Door
- * 6 Car spaces
- * Secure Remote Control Gating

Rental:
 \$31,000 pa \$2,583.33pcm \$595.15 pw
 (Plus outgoings & GST)

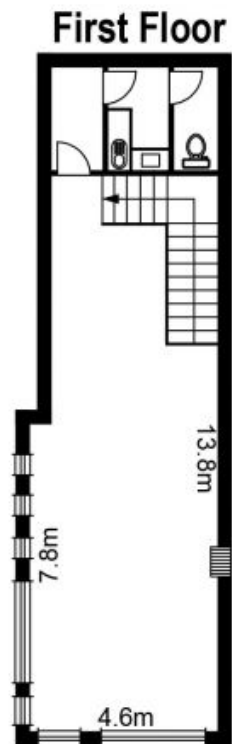
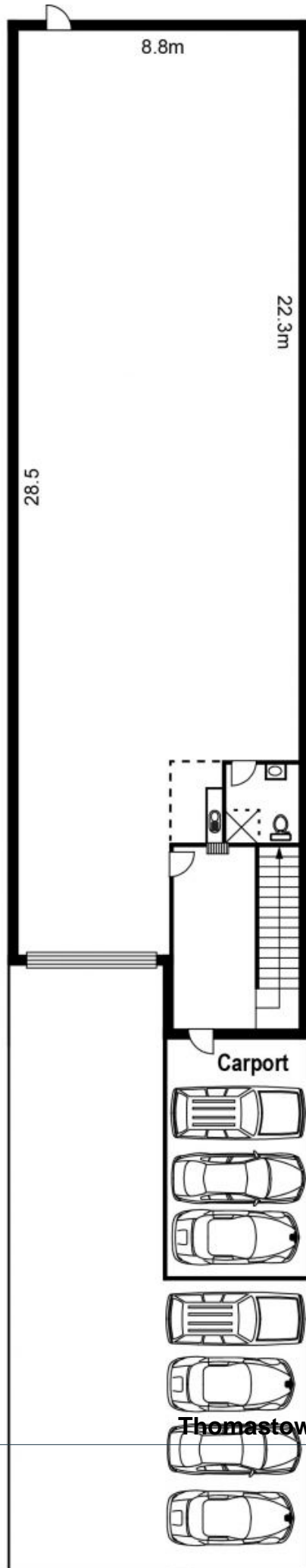
Council Rates: \$0.00 p/q
Water Rates: \$0.00 p/q
Strata Rates: \$0.00 p/q



Branko Agatanovic **Michael Sabelberg**

0448 035 565
 branko.a@lovere.com.au

0450 554 317
 michael.s@lovere.com.au



LOVE & CO

36B Lipton Drive

Thomastown, VIC