



13/1 Austarc Avenue Thomastown, VIC

## GREAT VALUE WAREHOUSE/FACTORY

- Factory/ Warehouse space of 780 SQM (approx.)
- 3 phase power available
- 3x roller door access
- onsite parking
- Zoned Industrial 1
- Easy access to Western Ring Road
- Property is only available for a maximum two year lease

### Rental:

\$56,000 pa, \$4,666.66 pcm, \$1,076.92 pw  
(Plus outgoings and GST)

**Council Rates:** \$0.00 p/q

**Water Rates:** \$0.00 p/q

**Strata Rates:** \$0.00 p/q



**Branko Agatanovic**

0448 035 565

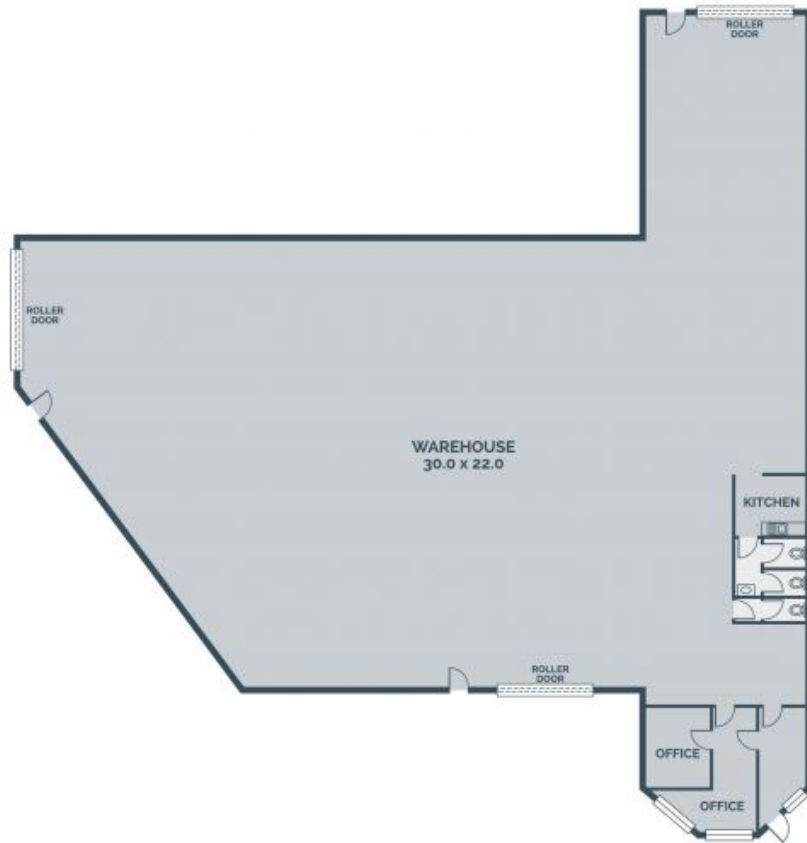
branko.a@lovere.com.au



**Michael Sabelberg**

0450 554 317

michael.s@lovere.com.au



Every precaution has been taken to establish accuracy of the information in this brochure but does not constitute any representation by the vendor or agent.

LOVE & CO

LOVE & CO

13/1 Austarc Avenue

Thomastown, VIC