



44 Alvarado Avenue Thomastown, VIC



MODERN APPEAL - SOLID BUILD

With quality built to last, this beautifully elevated European style beauty offers comfort, space and contemporary living in popular West Thomastown. Conveniently located just minutes to local shops, schools, TRAC recreational facilities, leisurely parks and quick access to the Ring Road Network for easy commute to the CBD, major freeways and Melbourne airport. Stylishly modernised whilst retaining it's classic charm, you will immediately feel the warm ambience that flows throughout this instantly appealing BV family home.

Comprising inviting tiled porch, spacious formal lounge, separate dining room, 3 good sized bedrooms, master with ensuite and built in robes, stunning stone finished kitchen with 900mm gas cook top/electric oven, feature tiled splashback, complemented by meals/ living area, central family bathroom and separate updated laundry. Features include timber floor boards, ducted heating, evaporative cooling, high ceilings with decorative cornices, quality light fittings and window furnishings, security roller shutter blinds, plenty of storage space, terracotta tiled roof, side drive with roller door to brick garage with work shop at the rear, plus so much more on an easy care, low maintenance allotment of approx 545m². Great family home in a great location.

Price:

Contact Agent



Anwar Kattan

0431 169 844

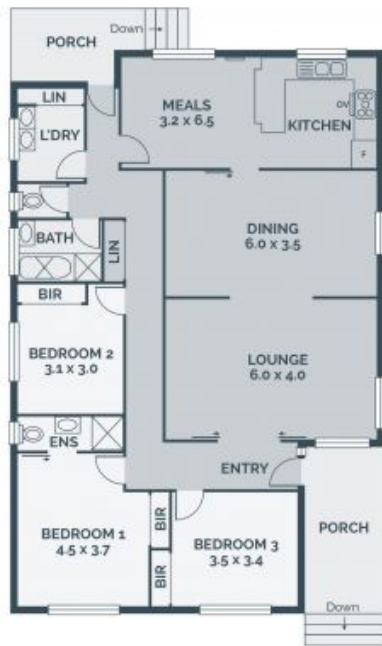
anwar.k@lovere.com.au



Jude Kattan

0450 848 255

jude.k@lovere.com.au



FLOOR PLAN



SITE PLAN

Every precaution has been taken to establish accuracy of the information in this brochure but does not constitute any representation by the vendor or agent.

LOVE & CO

LOVE & CO

44 Alvarado Avenue

Thomastown, VIC