



2/38 Church Street Epping, VIC



LOOK NO FURTHER!

This modern, 1 bedroom unit offers comfortable living at an affordable price, and is sure to impress!

Comprising:

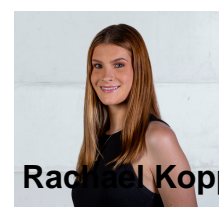
- 1 Bedroom with Walk In Robe
- Ducted Heating
- Split System Air Conditioner
- European Laundry
- Central Bathroom
- Remote Garage
- Low Maintenance Courtyard

NEAREST SCHOOLS: Goodstart Early Learning Epping, Epping Preschool, Epping Primary School, St Peter's Primary School, Epping Secondary College, St Monica's College and Melbourne Polytechnic.

Price: \$380 Per Week



Rachael Kopp



Rachael Kopp

lovemillpark@mail.inspectrealest.com.au lovemillpark@mail.inspectrealest.com.au