

11 Wistow Chase Wollert, VIC



3



2



4

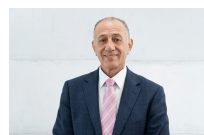
AFFORDABLE BOUTIQUE FAMILY HOME

Here is an exciting opportunity to buy a near new quality built family home and enjoy an idyllic lifestyle where everything you need is within easy reach, only minutes to Aurora Village Shopping, picturesque parks, nature reserves, open spaces and all the amenities this vibrant, multicultural community has to offer.

With lovely street appeal and a modern open plan design, this beautifully presented boutique family home comprises formal lounge, 3 bedrooms with BIRS, master with WIR and full ensuite, central family bathroom, stylish kitchen with stone bench tops, 900 mm gas cooktop/electric oven, island breakfast bar with dishwasher, incorporating meals/dining family living area and separate laundry. A very desirable north facing rear yard ensures an abundance of natural light all year round. Features include ducted heating/cooling, quality light fittings and window furnishings, down lights, alarm system, neutral colour tones throughout, alfresco space, perfect for relaxing and entertaining, double garage with internal access, plus so much more on an easy to care, low maintenance allotment.

Price:

Contact Agent - \$560,000



Anwar Kattan

0431 169 844

anwar.k@lovere.com.au

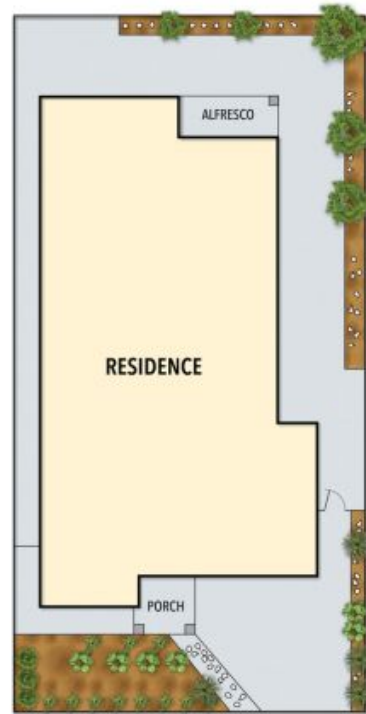


Jude Kattan

0450 848 255

jude.k@lovere.com.au

11 Wistow Chase, Wollert



THE ABOVE PLAN IS AN ARTIST'S IMPRESSION ONLY, IT INCLUDES ELEMENTS THAT ARE FOR DISPLAY PURPOSES ONLY AND MAY NOT BE TO SCALE. LANDSCAPING SHOWN IS INDICATIVE ONLY. DIMENSIONS ARE APPROXIMATE.

LOVE & CO

11 Wistow Chase

Wollert, VIC