



14 Creekege Views Epping, VIC

4 2 1

Enjoy Every Lifestyle Aspect!

Set Negotiation: Monday 30th September at 6:00pm (Unless Sold Prior)

Price: \$500,000 - \$550,000

Representing outstanding value in a premium pocket enjoy the benefits of Harvest Home Primary School at the end of the street and Aurora Village only a short walk away, this four-bedroom home easily delivers on every element of modern low-maintenance living in lifestyle surrounds. The generous main bedroom indulges with an ensuite and walk in robe, while the remaining three are well served by the family bathroom. The large light filled casual living zone, stretching out from a stone kitchen, opens to an alfresco in low maintenance gardens for relaxed easy indoor-outdoor living!

- Ducted heating and cooling
- Clever blend of tiles and quality carpet



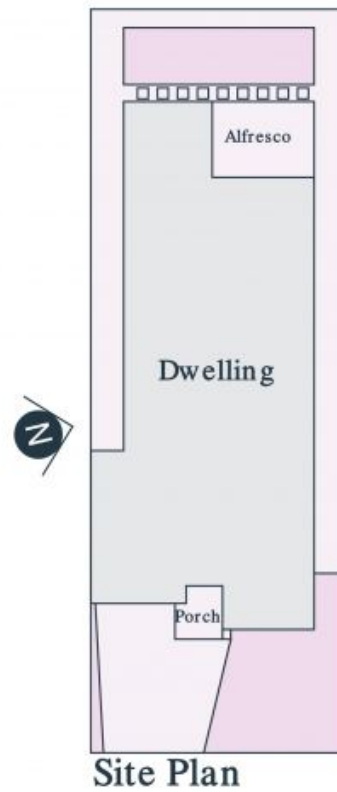
Jim Kalakias

0402 177 336
jim.k@lovere.com.au



George Stathopoulos

0403 053 836
george.s@lovere.com.au



Every precaution has been taken to establish accuracy of the information in this brochure but does not constitute any representation by the vendor or agent

LOVE & CO

14 Creekege Views

Epping, VIC