



20 Bambra Way Wollert, VIC

 4
  2
  3

AFFORDABLE BOUTIQUE FAMILY HOME

Perfectly positioned in the popular Eucalyptus Estate, this METRICON built boutique family home is designed for modern living, comfort and space.

Surrounded by picturesque nature reserves, rolling hills and recreational walking tracks, this beautiful home is within easy reach to all essential amenities, schools, shops, bus services and major road arterials. Comprising 4 bedrooms with BIRS, master with walk in robe and full ensuite, central tiled family bathroom, bright stylish kitchen with 900mm gas standalone cooker, breakfast bar, stone bench tops, adjoining meals area, complimented by family/living area, overlooking low maintenance rear gardens, enclosed entertaining area, separate laundry and secure remote controlled, double garage with internal access. Features include ducted heating, split system heating/cooling, light fittings, window furnishings, neutral colour decor throughout, down lights, timber flooring, carpets to bedrooms plus so much

Price:

Contact Agent



Anwar Kattan

0431 169 844
anwar.k@lovere.com.au



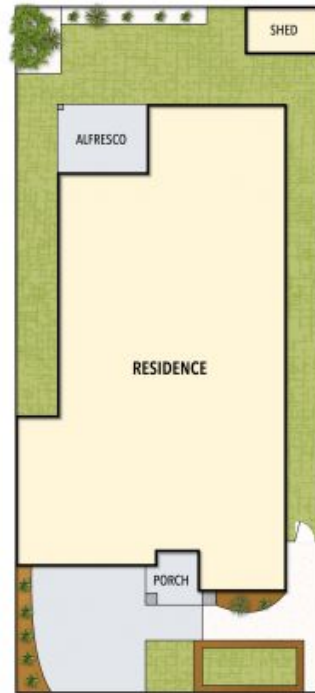
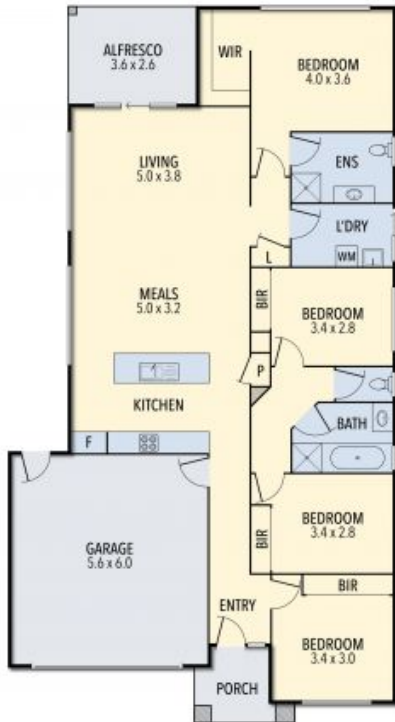
Anwar Kattan

0431 169 844
anwar.k@lovere.com.au

20 Bambra Way, Wollert



SHED
3.0 x 1.8
(NOT IN POSITION)



THE ABOVE PLAN IS AN ARTIST'S IMPRESSION ONLY, IT INCLUDES ELEMENTS THAT ARE FOR DISPLAY PURPOSES ONLY AND MAY NOT BE TO SCALE. LANDSCAPING SHOWN IS INDICATIVE ONLY. DIMENSIONS ARE APPROXIMATE.

LOVE & CO

20 Bambra Way

Wollert, VIC