



19 Horseshoe Crescent Epping, VIC



### The Luck of the Horseshoe

This stunning family residence that has been impeccably renovated with designer finishes, in one of Eppings' most desirable locations. Offering 3 spacious bedrooms, a stylish bathroom, an expansive lounge area adjoining a formal lounge and open plan kitchen/meals. Sliding doors open out to a beautiful courtyard alongside a entertaining area/carport.

? Set within a family friendly neighbourhood walking distance to Meadow Glen Primary School, the bus stop and the local shopping strip and within a short drive or bus trip to Epping station, Epping Plaza and Westfield South Morang.

- ? Renovated with modern finishes
- ? Relaxed lifestyle, inner city living
- ? Separate laundry with access to rear yard
- ? Large living zones, formal dining and separate living area.

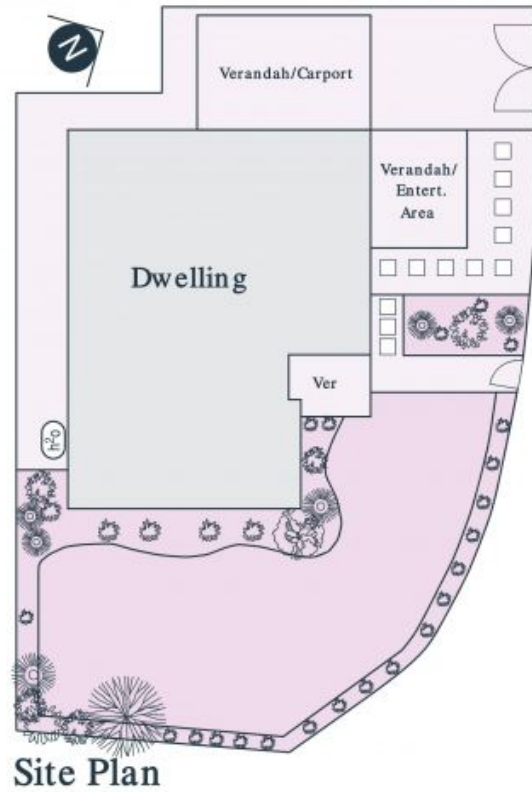
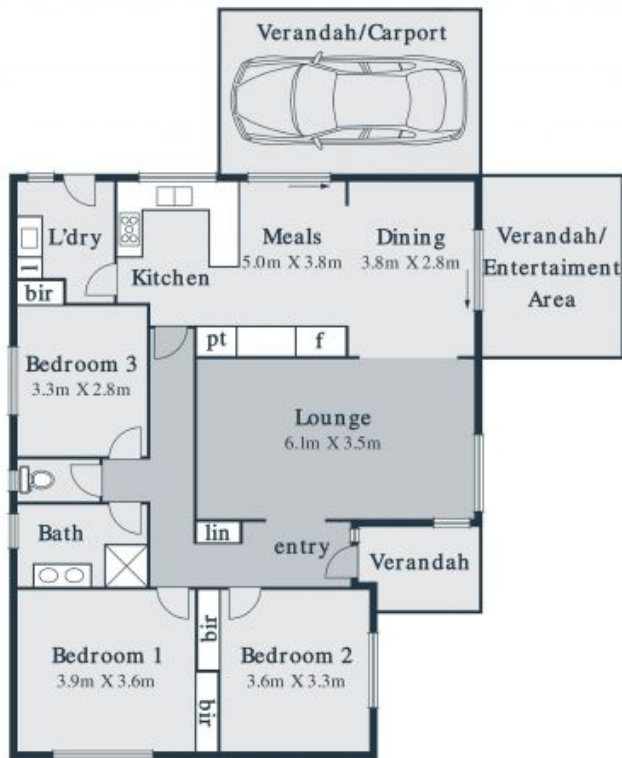
**Price:** \$505,000



**Jim Kalakias**  
0402 177 336  
jim.k@lovere.com.au



**George Stathopoulos**  
0403 053 836  
george.s@lovere.com.au



Every precaution has been taken to establish accuracy of the information in this brochure but does not constitute any representation by the vendor or agent