

29 Raychelsbury Parade Wollert, VIC



4



2



2

### Light Filled Spaces And Contemporary Style

This immaculate four bedroom, two bathroom home, set among virtually no maintenance gardens, an easy walk to supermarkets, cafes, eateries, school, parks and the bus to the station and Plaza delivers style, quality and functionality. Laid out for harmonious family living, the main bedroom with ensuite and walk-in robe is zoned from the remaining three bedrooms, while a lounge delivers quiet space for you to enjoy while the kids make the most of the expansive casual living zone sweeping out to the rear yard.

- ? Open plan kitchen with quality appliances, large breakfast bench
- ? Robes to all bedrooms, walk-in to main
- ? Access to rear yard from two points
- ? Sleek contemporary ensuite
- ? Large family bathroom
- ? Blend of tiled and carpeted floors

**Price:** \$620,000



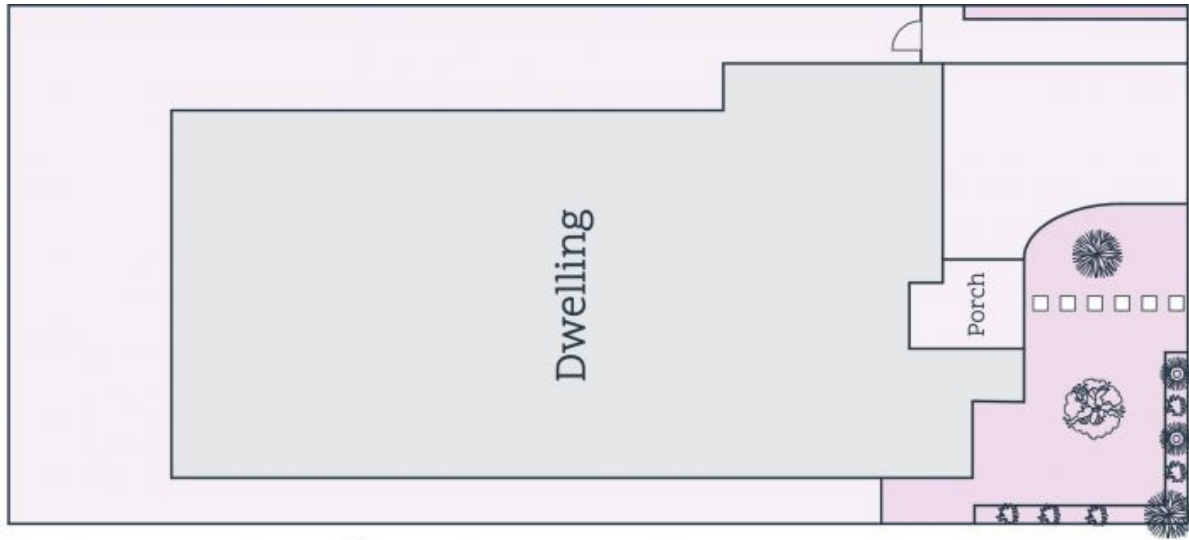
**Jim Kalakias**

0402 177 336  
jim.k@lovere.com.au

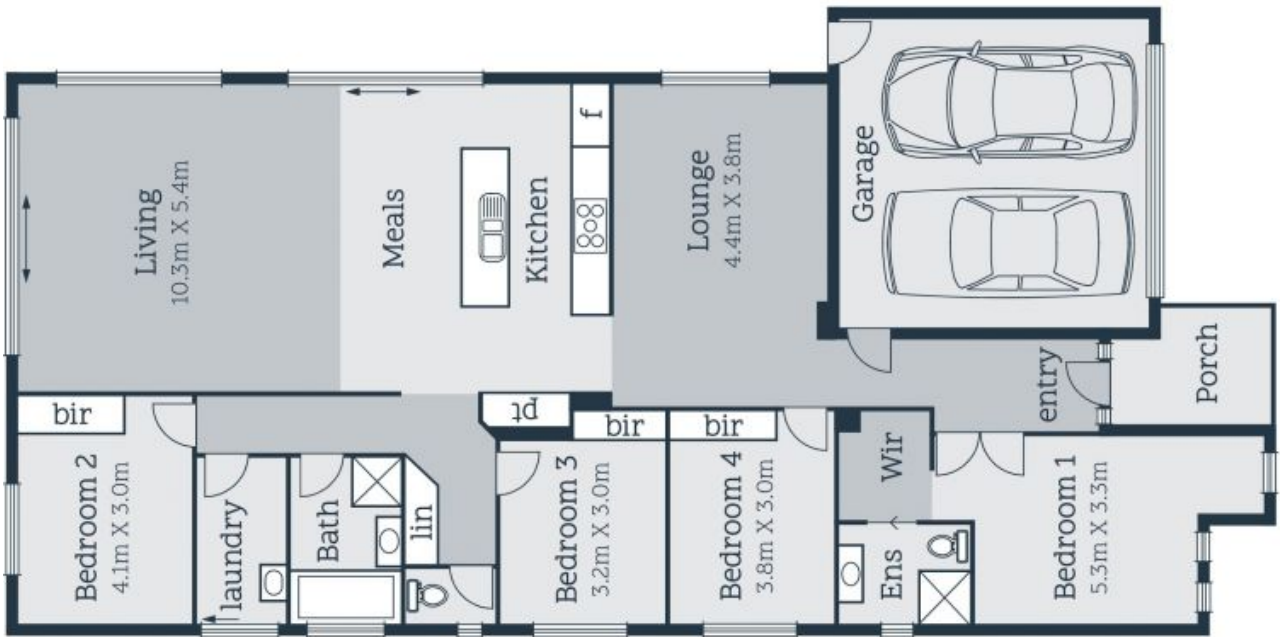


**George Stathopoulos**

0403 053 836  
george.s@lovere.com.au



Site Plan



Every precaution has been taken to establish accuracy of the information in this brochure but does not constitute any representation by the vendor or agent



29 Raychelsbury Parade

Wollert, VIC