



30 Creeds Farm Lane Epping, VIC



A Sanctuary Of Family Living

Set Negotiation: Tuesday 18th December at 6:00pm (Unless Sold Prior)

Price: \$650,000 - \$700,000

Setting a stylish scene for a relaxed lifestyle, this five bedroom, three bathroom home in the prestigious Aurora Estate enjoys a prize position opposite parklands, moments from the school and kinder and within a few minutes of both Aurora and Lyndarum Villages. Formal and casual living complemented by a generous covered alfresco deliver a wonderful, blend of indoor-outdoor spaces ready for relaxed living and entertaining.

- Double auto garage with internal access
- Heating and cooling
- Kitchen with brand new stainless steel appliances
- Three designer bathrooms
- Five bedrooms
- New carpet



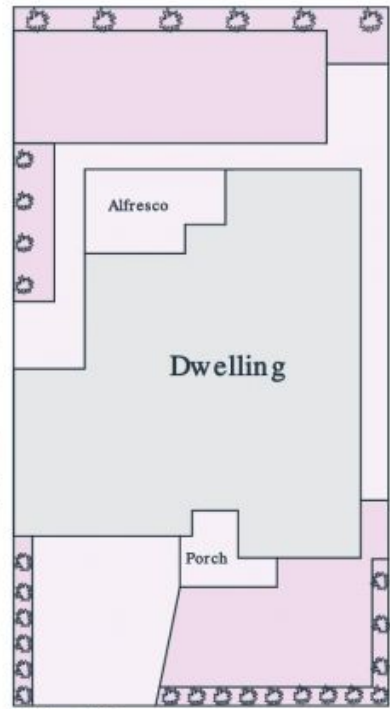
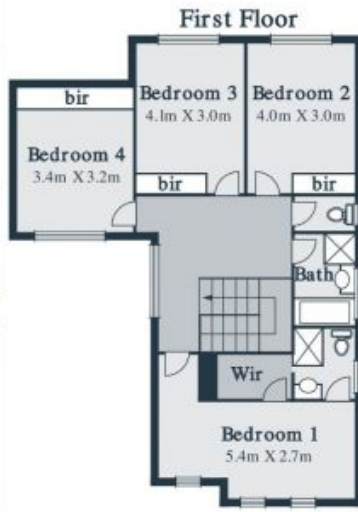
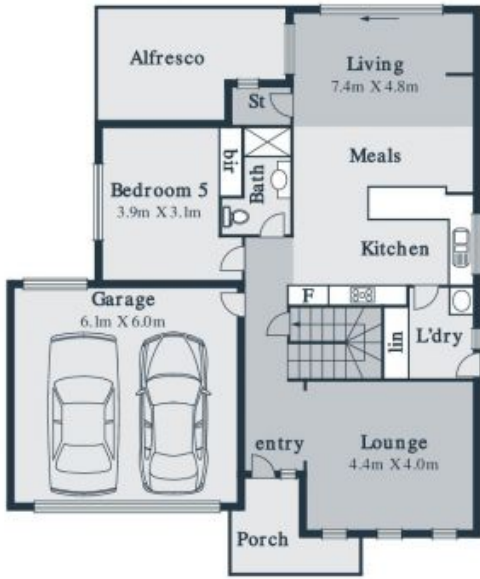
Jim Kalakias

0402 177 336
jim.k@lovere.com.au



George Stathopoulos

0403 053 836
george.s@lovere.com.au



Site Plan

Every precaution has been taken to establish accuracy of the information in this brochure but does not constitute any representation by the vendor or agent