



52 Middlesborough Drive Craigieburn, VIC



4



2



2

## The Ideal Home Or Investment!

This four bedroom, two bathroom home provides the perfect springboard to a coveted family lifestyle or an exceptional investment opportunity! In need of some cosmetic TLC, the surprisingly spacious interior includes a formal lounge, huge casual living overlooked by the stainless steel equipped kitchen and an equally generous rumpus room?.both opening to garden spaces ready for your green thumb! Located near the bus, Hyde Park Reserve, the general store and schools including Craigieburn Primary and Mt Ridley College, this is the ideal home for you.

- \* Double garage with internal access
- \* Ducted heating
- \* Split system unit
- \* Ensuite to main bedroom
- \* Three generous living areas
- \* Large 565m2 allotment (approx)

**Price:**

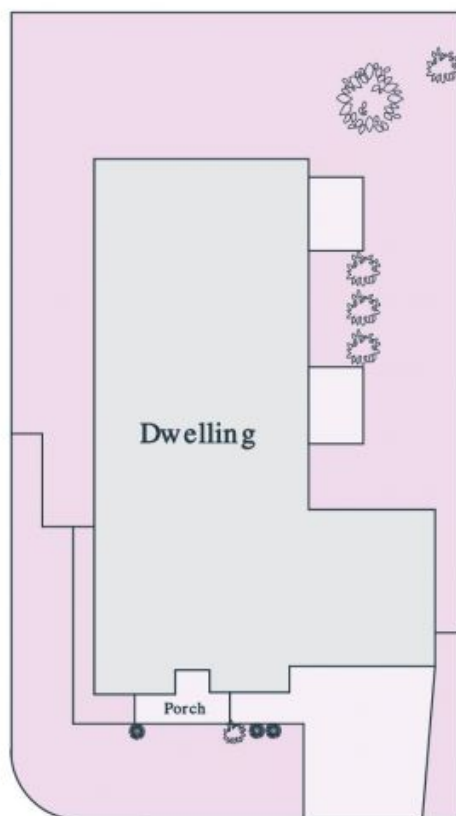
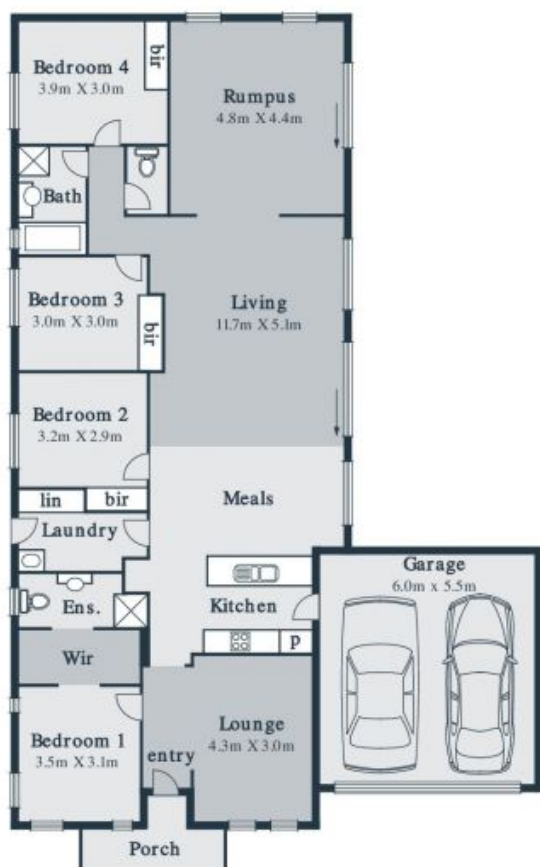
**SOLD - \$541,500**



**Shane Yaman**

0417 557 972

shane.y@lovere.com.au



**Site Plan**

Every precaution has been taken to establish accuracy of the information in this brochure but does not constitute any representation by the vendor or agent

**LOVE & CO**

**52 Middlesborough Drive**

**Craigieburn, VIC**