



19/12 Kirkland Court Epping, VIC

 1
  1
  1

Easy Living, No Maintenance Environment

Set Negotiation: Monday 15th October at 6:00pm (Unless Sold Prior)

Price: \$275,000 - \$300,000

Nestled in this sought-after enclave just moments from Hayston Park, Lyndarum Village and the bus to the station and Plaza, this single level home delivers a superb starter, desirable downsizer or long term set and forget investment. Opening to the single bedroom, pristine bathroom and private rear garden, a generous climate controlled open plan living meals zone anchored by a stainless-steel equipped kitchen forms the hub of the home. Delivering easy living in a virtually no maintenance environment, this a perfect affordable start to real estate success!

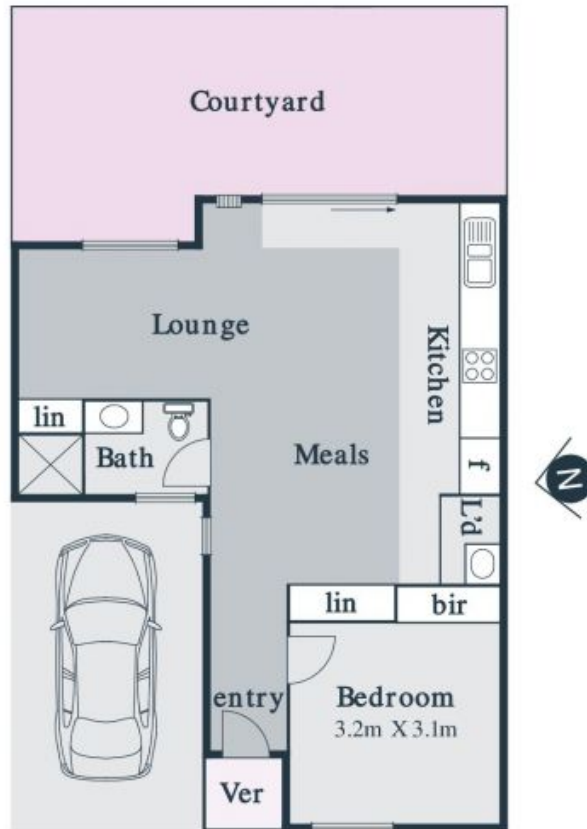
- Car-parking allocated/on title
- Split system climate control
- Spacious carpeted living zone
- Bedroom with built in robe



George Stathopoulos & **Jim Kalakias**

0403 053 836
george.s@lovere.com.au

0402 177 336
jim.k@lovere.com.au



Every precaution has been taken to establish accuracy of the information in this brochure but does not constitute any representation by the vendor or agent