



10 Sundial Parade Epping, VIC

 3

 2

 1

### Perfect Parkside Living

Set Negotiation: Monday 27th August 2018 at 6:00pm (Unless Sold Prior)

**Price:** \$510,000 - \$560,000

A tranquil bush parkland directly opposite, Creeds Farm caf? and childcare just a few minutes walk away and Lyndarum shopping village, Epping Plaza and the station all within easy reach enhance the lifestyle appeal of this contemporary home on an easy to manage allotment.

Complementing three bedrooms (main with ensuite) is a generous open plan living zone. Wrapping around a stone finished kitchen, carpet and tiles define living and dining spaces, opening to the north facing rear yard.

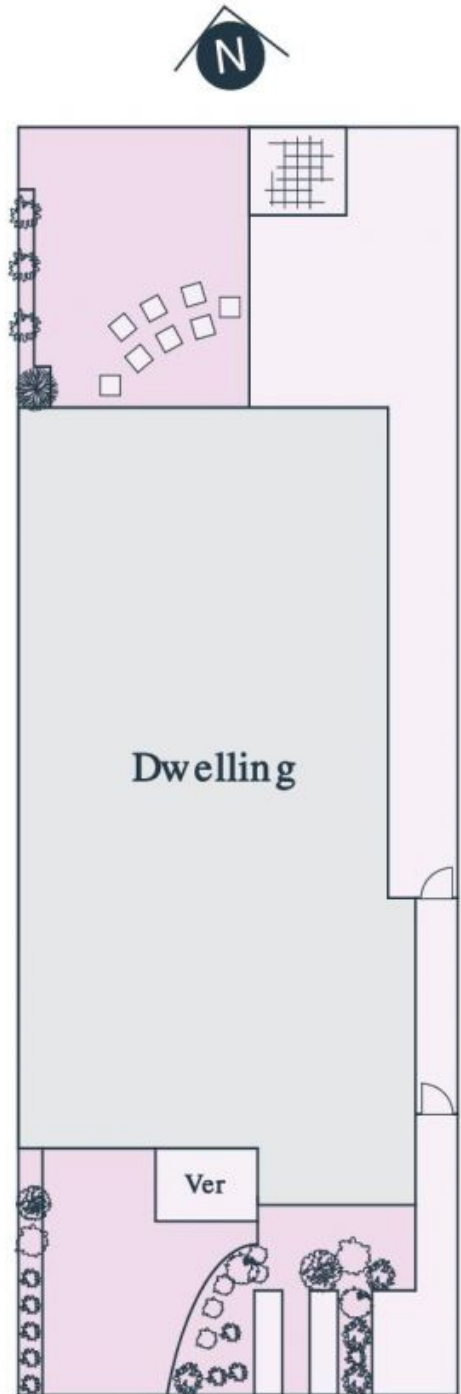
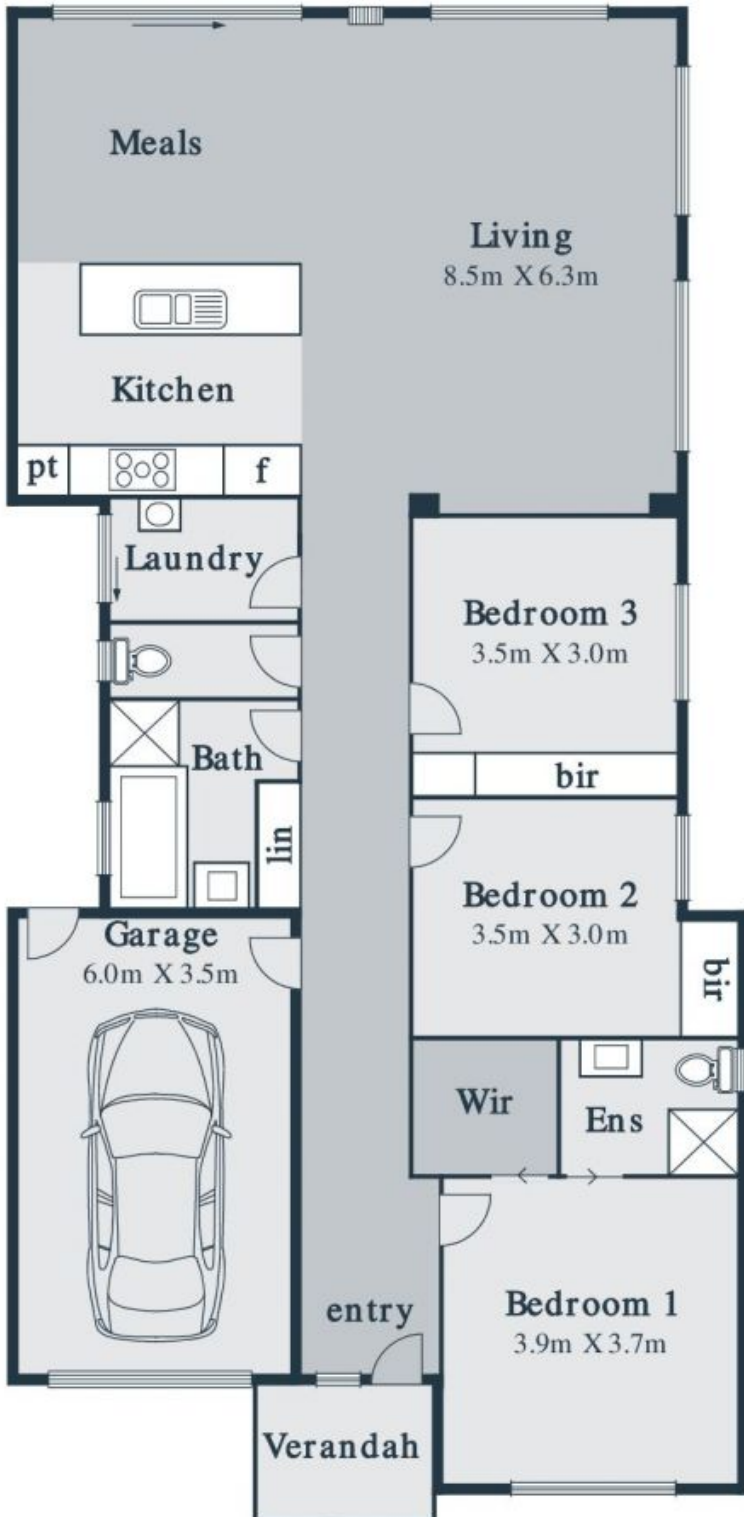
- Garage with auto door and internal access
- Ducted heating and split system unit
- Kitchen with stainless steel appliances, filtered water
- Storage options throughout



**George Stathopoulos**

0403 053 836

george.s@lovere.com.au



**LOVE & CO**

10 Sundial Parade Epping, VIC

Every precaution has been taken to establish accuracy of the information in this brochure but does not constitute any representation by the vendor or agent