



7 Teschke Walk Epping, VIC



Opposite The Park, Overlooking The Lake

Representing outstanding value in a premium pocket directly opposite parklands that wrap around a lake, this five-bedroom home easily delivers on every element of modern low-maintenance living in lifestyle surrounds. The lower level offers the ease of main bedroom with full ensuite, while two of the four upstairs bedrooms enjoy ensuite convenience, opening to the family bathroom. The thoughtful layout has two living areas complemented by an alfresco linking the house to the double garage.

- Walk to cafes, supermarkets and transport
- Stoll to Lyndarum Village
- Striking black stone over white cabinetry
- Easy access to Epping Plaza and station
- Large covered alfresco
- Two living areas across two spacious levels
- Ground floor bedroom with ensuite

Price: SOLD - \$600,000



Jim Kalakias

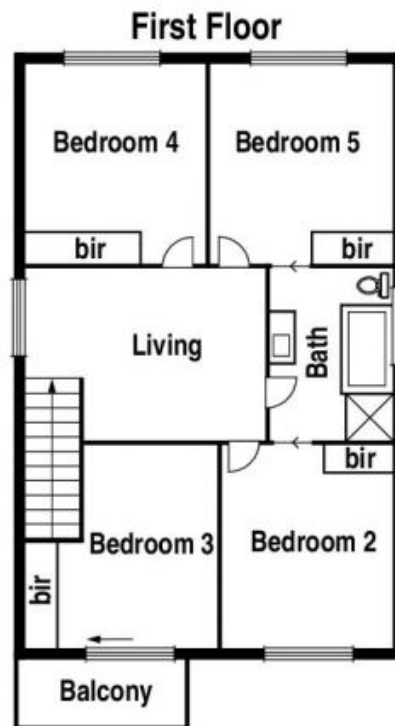
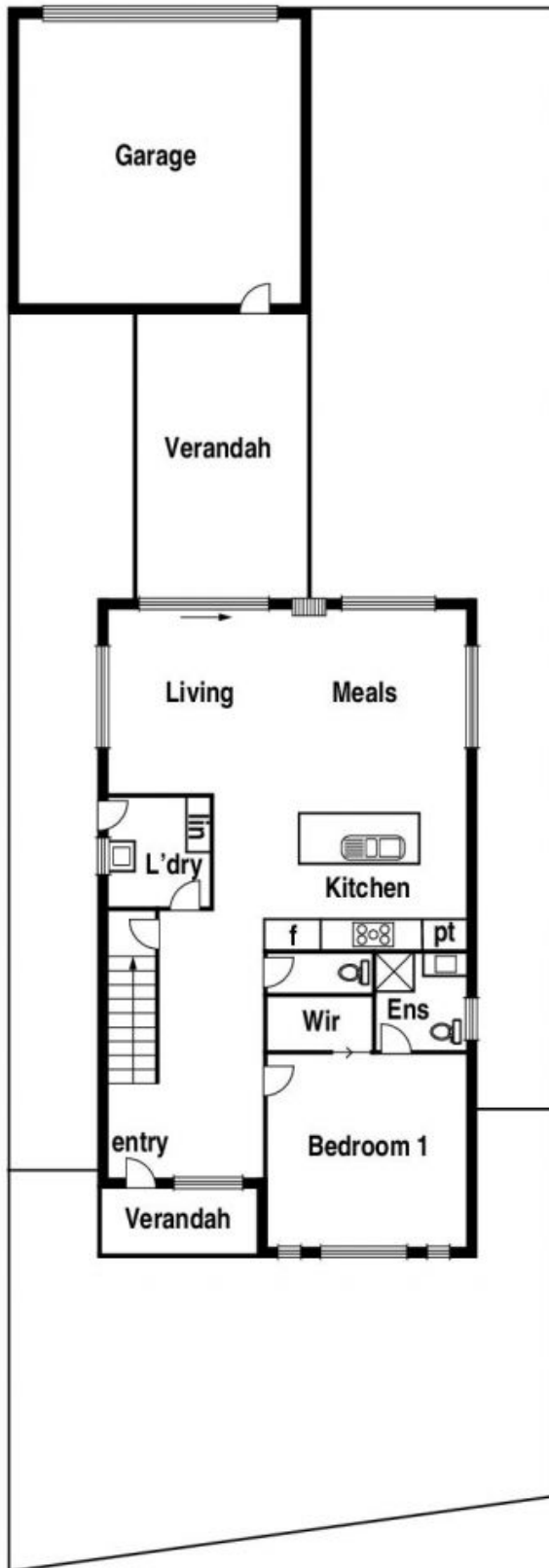
0402 177 336
jim.k@lovere.com.au



George Stathopoulos

0403 053 836
george.s@lovere.com.au

7 Teschke Walk, Epping



The information contained herein has been obtained through sources deemed to be reliable but cannot be guaranteed as to its accuracy. Any information of special interest should be obtained through independent verification.

LOVE & CO

7 Teschke Walk

Epping, VIC