



2/2 Brand Drive Thomastown, VIC

**GREAT INDUSTRIAL INVESTMENT -
SUPERBLY POSITIONED STORAGE UNIT WITH
MEZZANINE OF**

Price: \$300,000

- Warehouse Area: 104 m2 approx
- Mezzanine Office: 43 m2 approx
- Fold-up Door
- 3 phase power
- 3 car spaces
- Zoned Industrial 1
- Easy access to the Western Ring Road

Lease Details

- + Rent - \$14,001.40 per annum plus outgoings
- + Term - 1 year from August 2017



Michael Sabelberg

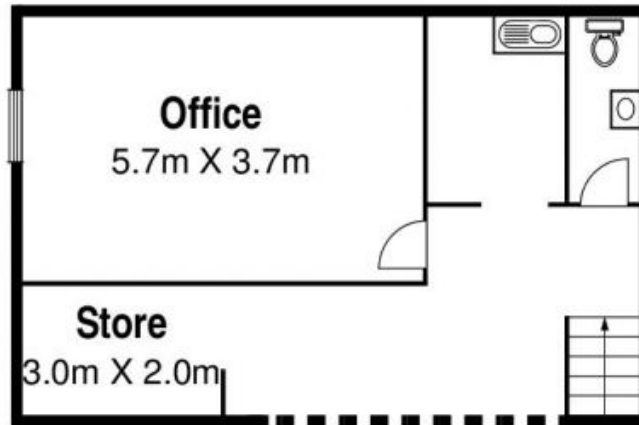
0450 554 317
michael.s@lovere.com.au



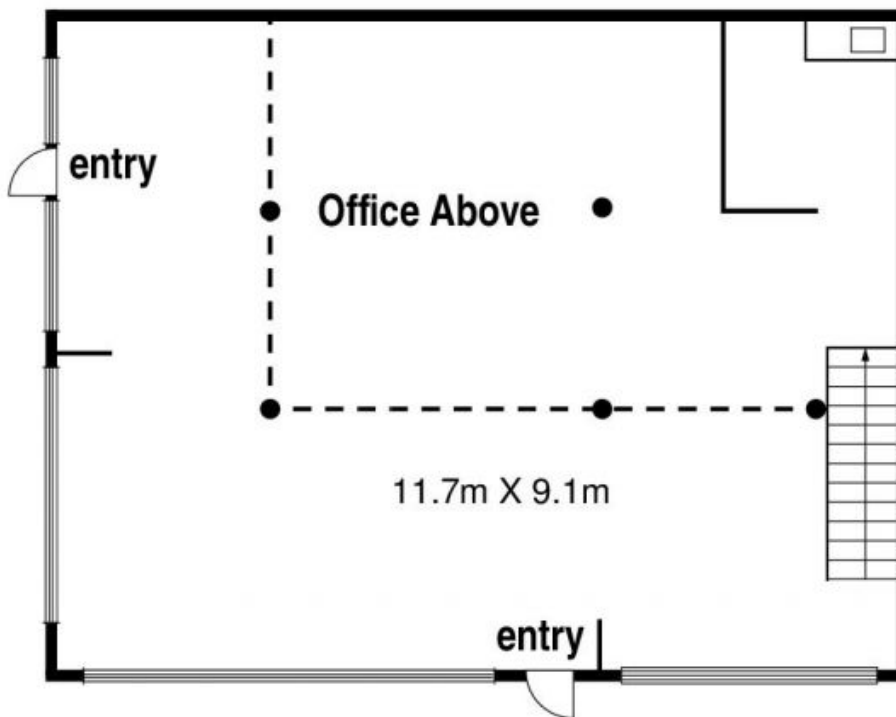
Michael Sabelberg

0450 554 317
michael.s@lovere.com.au

2/2 Brand Drive, Thomastown



Car Parking
(not in
position)



Car Parking
(not in
position)

Car Parking
(not in
position)