



37 Axebridge Circuit Epping, VIC

 4
  2
  2

Superior Living, Stunning Alfresco

Set in a premium pocket close to transport, schools and parklands and within easy reach of all the benefits of Lyndarum Village, this four bedroom, two bathroom Porter Davis home's spacious proportions, free flowing living and impressive alfresco form an ideal combination for contemporary living.

Laid out for relaxed living and excellent entertaining formal living opposite an open study (perfect formal dining room if desired) complements a vast open plan living- meals wrapping around a central kitchen fitted with quality stainless steel Blanco appliances.

Sliding doors peel back to allow access to a 50m2 alfresco haven stretching right across the entire width of the house. With a spa, and the clever addition of cafe blinds this domain delivers year-round additional living and superb entertaining.

Price: \$739,000



George Stathopoulos & **Jim Kalakias**

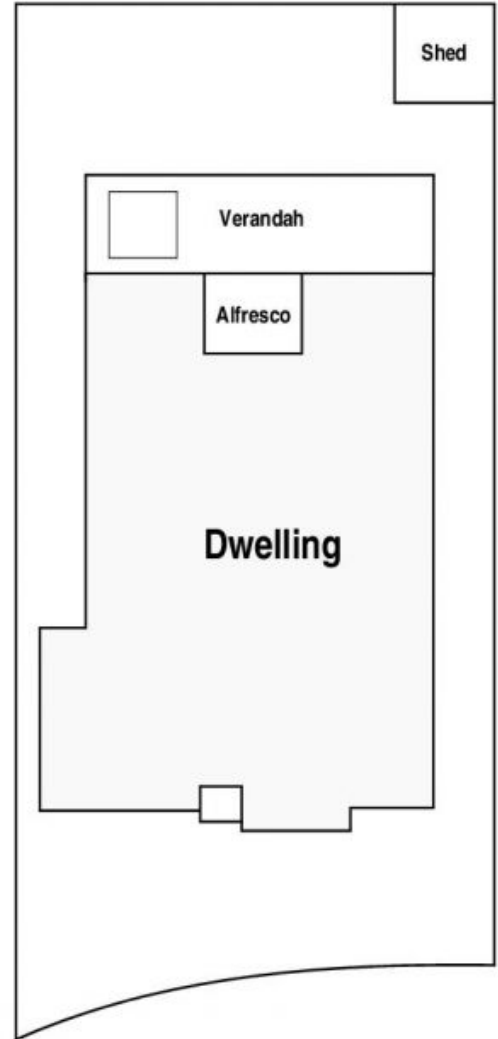
0403 053 836
george.s@lovere.com.au

0402 177 336
jim.k@lovere.com.au

37 Axebridge Circuit, Epping



Site Plan



The information contained herein has been obtained through sources deemed to be reliable but cannot be guaranteed as to its accuracy. Any information of special interest should be obtained through independent verification.

LOVE & CO

37 Axebridge Circuit Epping, VIC