



5 Palm Avenue Reservoir, VIC



3



1



2

Set For Success In A Super Spot

Traditional character and a very generous 601m2 (approx.) north facing allotment combine in an attractive opportunity with this inviting family home. Situated so that local shops, parks, the bus and Reservoir's station, shopping dining and entertainment options deliver lifestyle appeal within an easy stroll. Desired enhancements include timber floors, plate rails, and decorative cornice. Three bedrooms, central bathroom formal living, and updated kitchen deliver the perfect base to add a contemporary edge and extension (stca)

- * Garage with fitted benches
- * Gated parking
- * Potential to rebuild (stca)
- * Enhanced with period detail
- * 601m2 allotment (approx)
- * Heating and air conditioner

Price: SOLD - \$760,000



Graham Love

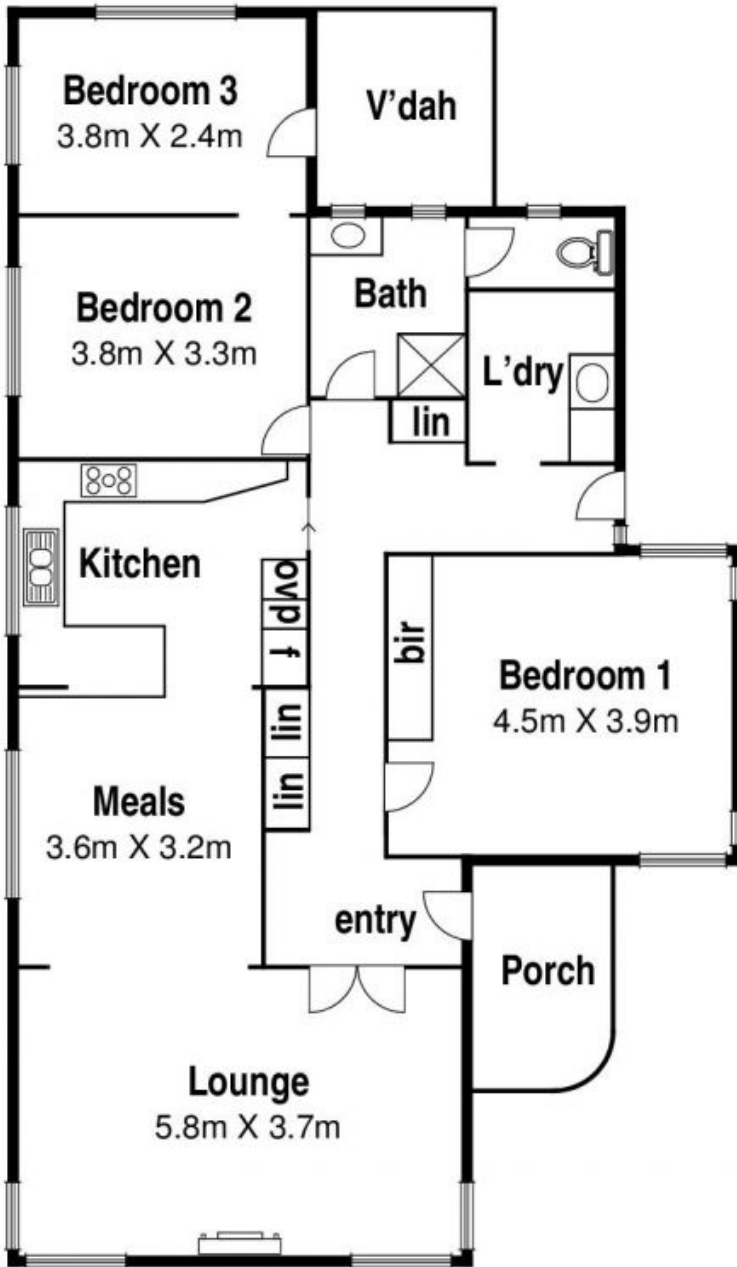
0418 534 450
graham.l@lovere.com.au



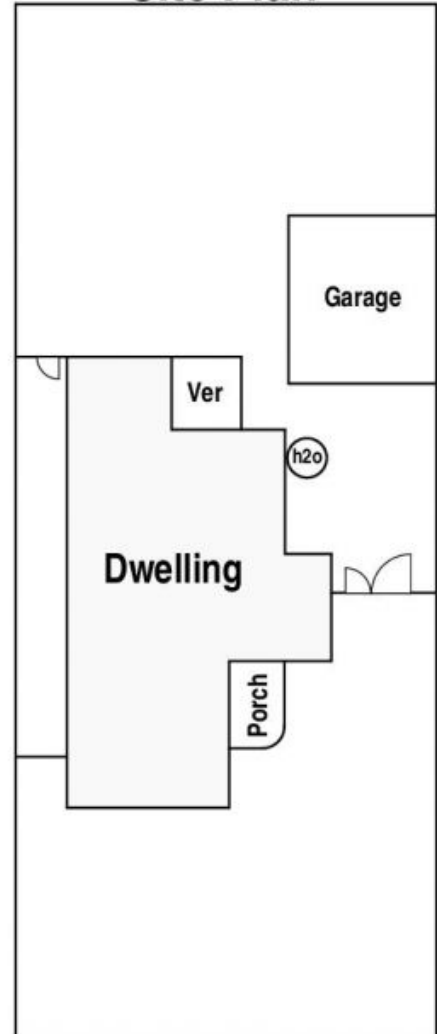
Kannan Subramanian

0411 711 232
kannan.s@lovere.com.au

5 Palm Avenue, Reservoir



Site Plan



The information contained herein has been obtained through sources deemed to be reliable but cannot be guaranteed as to its accuracy. Any information of special interest should be obtained through independent verification.

5 Palm Avenue

Reservoir, VIC

LOVE & CO