



188 Mahoneys Road Thomastown, VIC

## Prominence and First Rate Presentation

Excellent Showroom/Warehouse

- Building: 1,300 sqm approx.
- Includes 240 sqm approx. showroom over 2 levels and 105 sqm approx. offices
- Further mezzanine storage of 60 sqm approx.
- Dual roller door access
- Ample on-site parking & wash bay & driveway
- Showroom and offices are evaporatively-cooled and have split system aircon
- First time available since 1997
- Ample staff amenities

Prominently located premises opposite the Mahoneys Road & Hughes Parade intersection.

**Price:** Contact Agent

**Council Rates:** \$0.00 p/q

**Water Rates:** \$0.00 p/q

**Strata Rates:** \$0.00 p/q

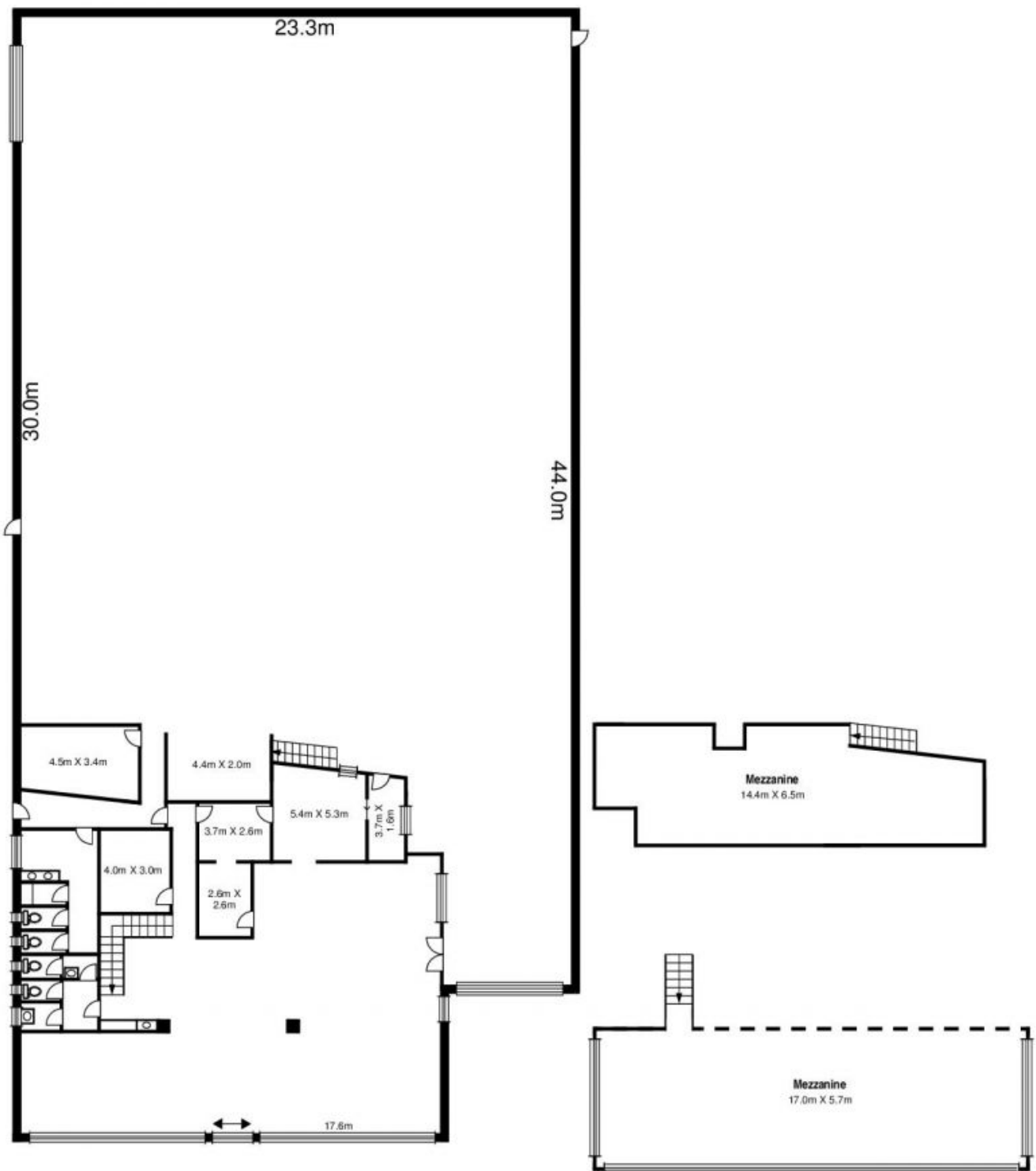


**Graham Love**

0418 534 450

graham.l@lovere.com.au

# 188 Mahoneys Road, Thomastown



LOVE & CO

The information contained herein has been obtained through sources deemed to be reliable but cannot be guaranteed as to its accuracy. Any information of special interest should be obtained through independent verification.

188 Mahoneys Road

Thomastown, VIC