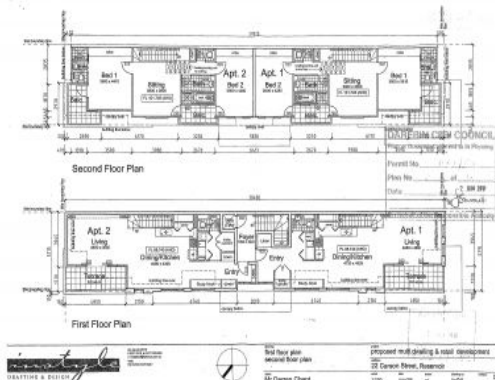
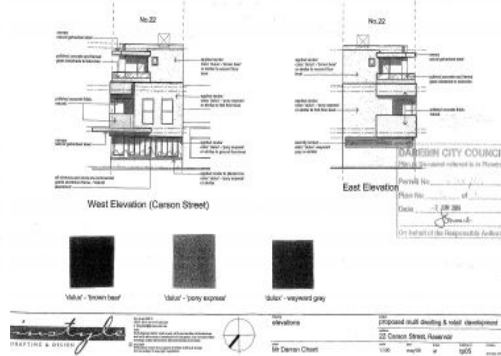
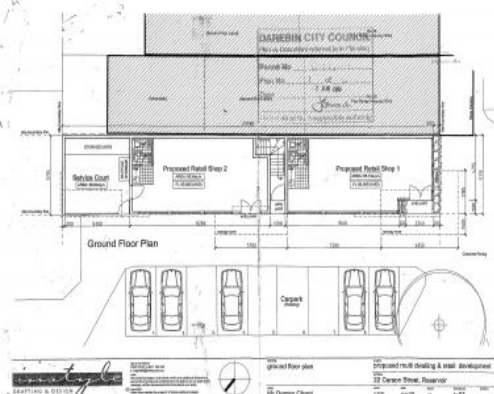




NB All measurements and boundary lines are approximate



## 22 Carson Street Reservoir, VIC

### Reservoir Corner Site With Feasible Permit

A fantastic opportunity to secure this corner site, close to Keon Park train station, local shops, cafes and public transport with easy access to Metropolitan Ring Road.

**Price:** \$365,000

- Feasible permit for 4 dwellings (2 shops, 2 units)
- Corner block
- Dual access
- Zoned Commercial 1
- Land Area of 174sqm (approx.)
- GST payable

If you're looking for a high profile location for business or wanting to expand your investment portfolio with potential to develop (STCA), this site should not be overlooked.



**Michael Love**

0400 106 577  
michael.l@lovere.com.au



**Graham Love**

0418 534 450  
graham.l@lovere.com.au