



46 Edwardes Street Reservoir, VIC

LANDMARK PROPERTY

- Lockup Shop of 440m2 (approx.)
- Zoned Commercial 1
- Land Area of 389m2 (approx.)
- NO GST PAYABLE

Presenting a unique opportunity to purchase this outstanding lockup shop in one of Melbourne's fastest growing suburbs. Adjacent to council car park, and only 12km approx. from the Melbourne CBD.

Price: Contact Agent

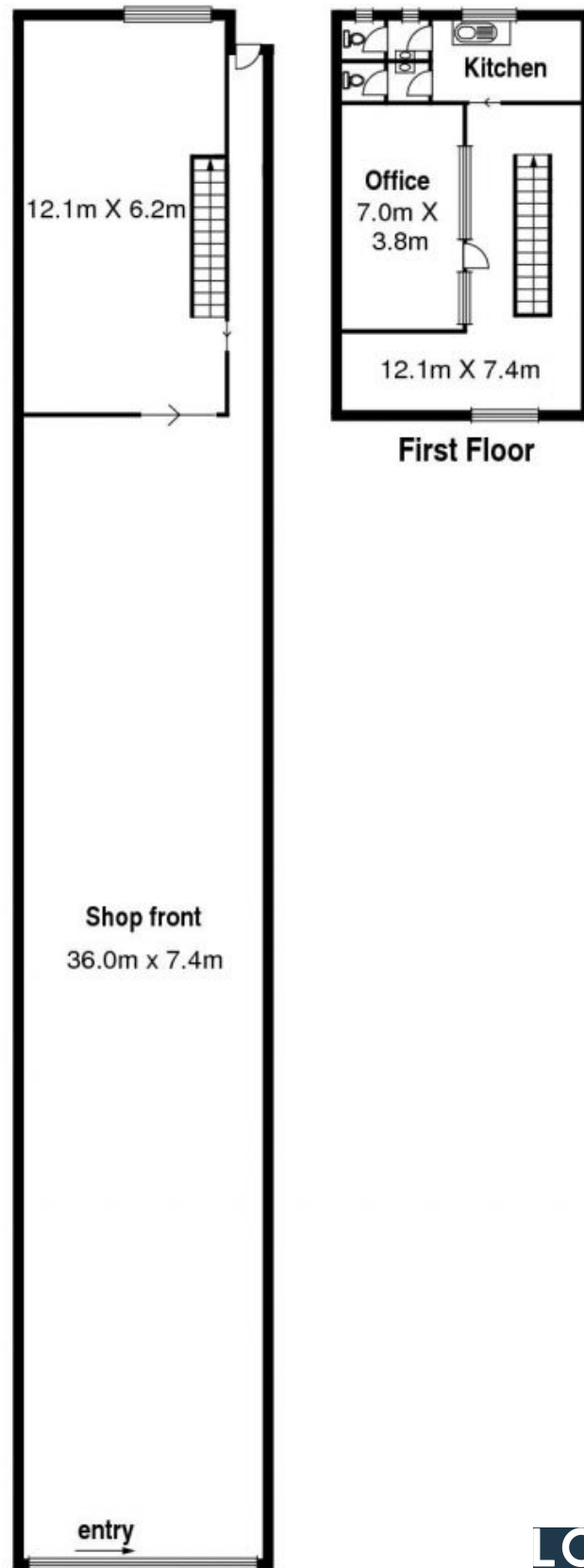


Graham Love

0418 534 450

graham.l@lovere.com.au

46 Edwardes St. Reservoir



46 Edwardes Street

Reservoir, VIC

LOVE & CO