



5 Nolan Drive Epping, VIC



Perfect Entry With Potential Plus

Positioned in a convenient pocket that has shops, schools, takeaways and transport all close by and Pacific Epping and station within a few minutes drive, this original home on a generous corner allotment offers the perfect start for first home buyers looking to enjoy now and enhance later.

Combining position, proportions and potential, it offers plenty of family friendly space with three bedrooms set around the family bathroom, traditional "L" shaped living dining and a functional kitchen that overlooks the family meals area.

Sliding doors open to a paved entertainment area in a private rear yard that offers a very handy shed and plenty of space for an extension if desired (stca).

Price: \$350,000



Jim Kalakias

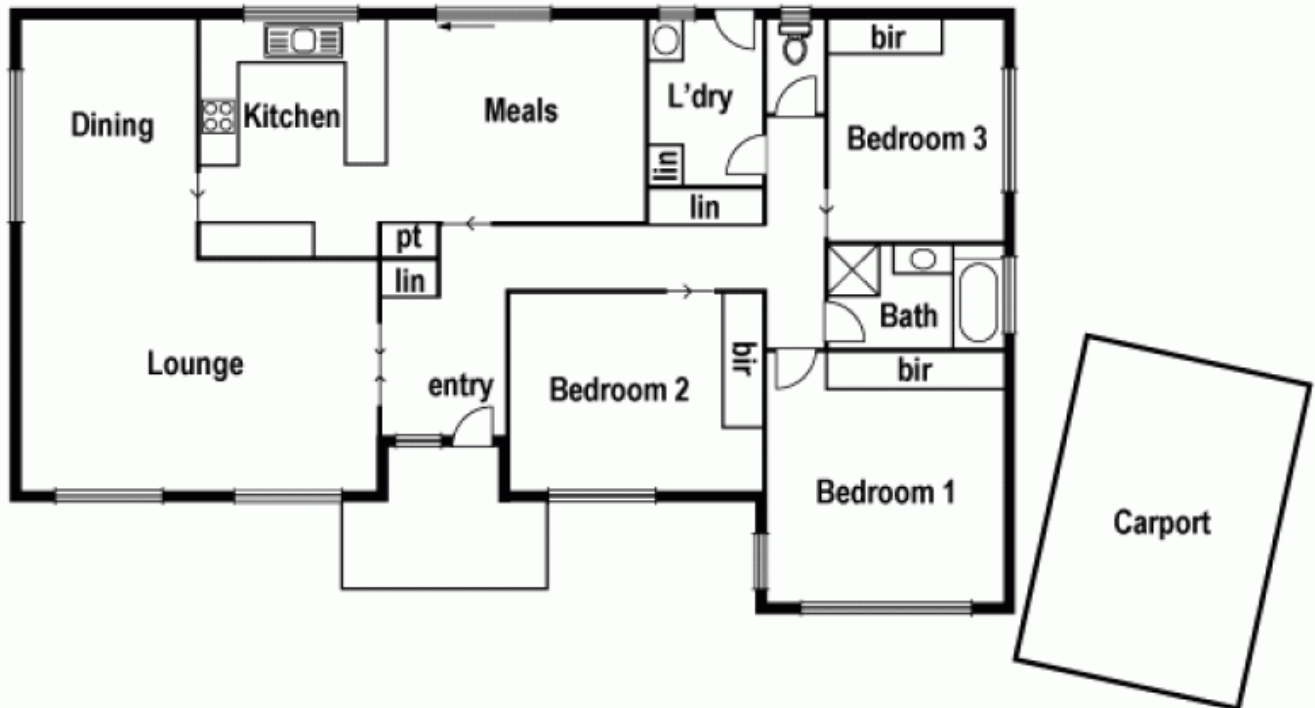
0402 177 336
jim.k@lovere.com.au



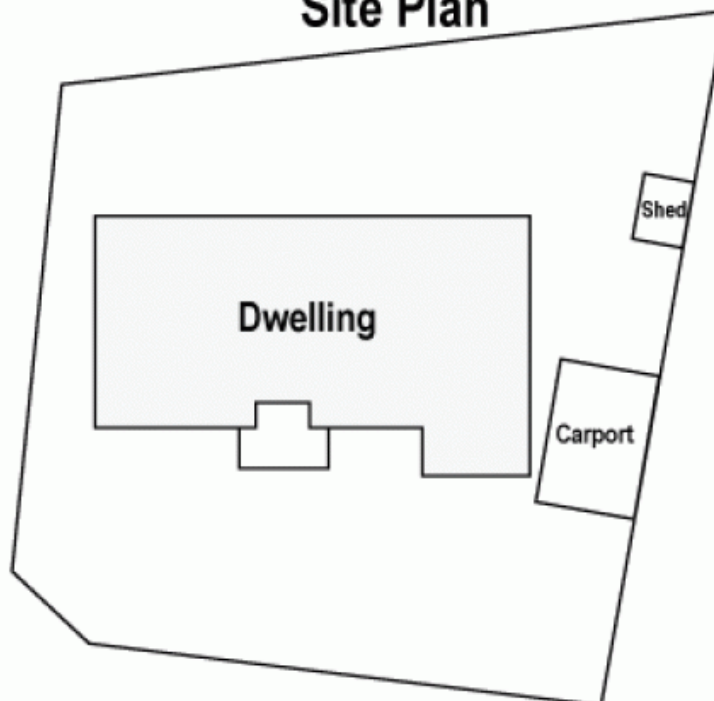
Bijan Rahimi

0451 515 301
bijan.r@lovere.com.au

5 Nolan Dv Epping



Site Plan



LOVE & CO

5 Nolan Drive

Epping, VIC