



8 Saxony Drive Epping, VIC



4



2



2

## Lucky Number 8 - Lyndarum Estate

Grand entrance, designer finishes and immaculate both inside and out, this stunning home combines style with functionality, and boasts all the comfort and convenience you would come to expect from a residence in this sought after Lyndarum pocket.

Entertaining is made simple with a very generous open plan living wrapping around a kitchen featuring waterfall stone benchtops, stainless steel appliances and easy care glass splash backs and opening to an absolutely spacious alfresco area. Adding to the appeal is a theatre room where you can just close the double doors after the kids have finished playing!

A study/retreat/sitting room opens to the large master suite finished with stone dual basin vanity and walk in frameless shower, while a stone bathroom serves the three remaining bedrooms.

**Price:** \$671,000



**Jim Kalakias**

0402 177 336

jim.k@lovere.com.au

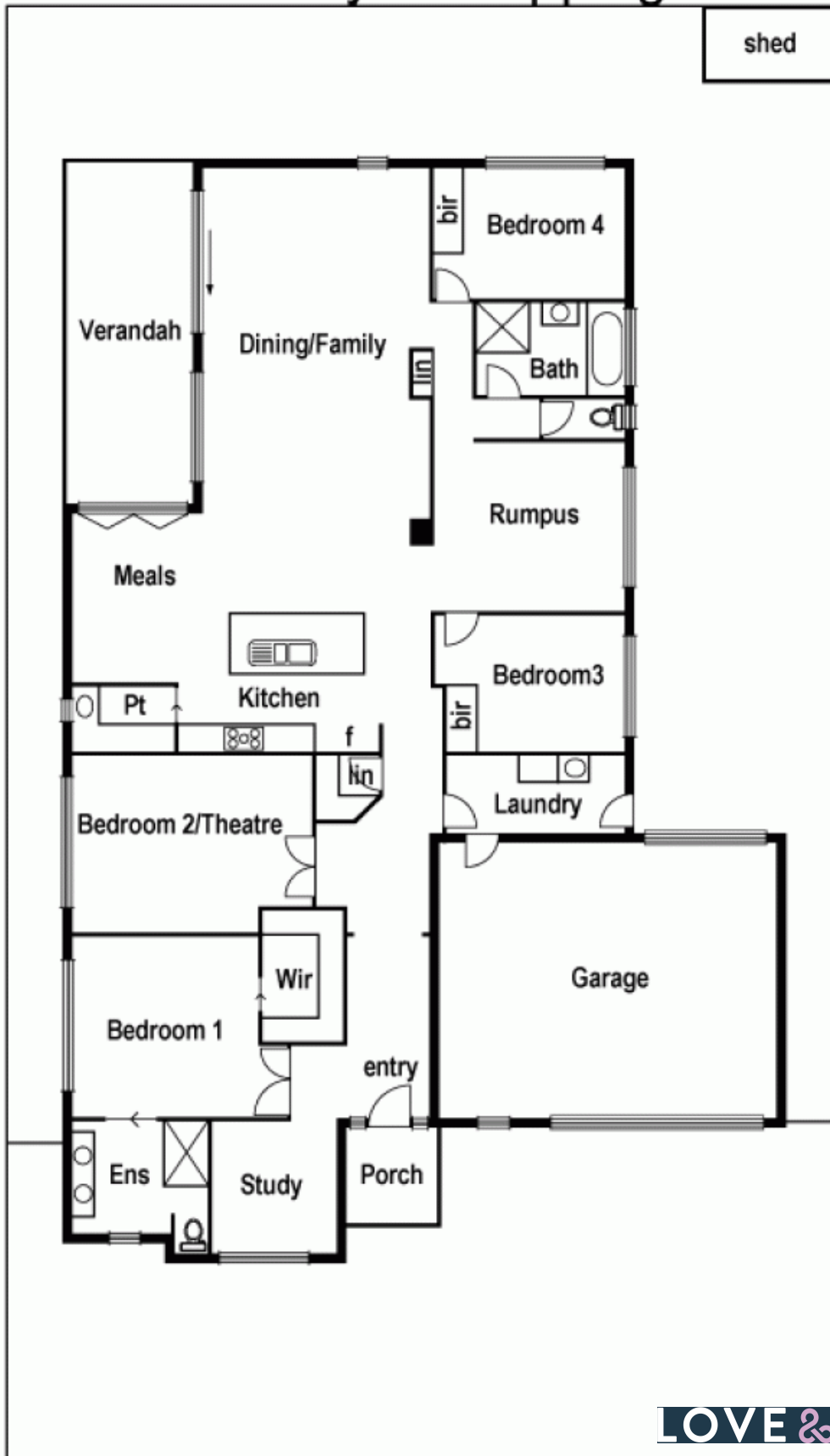


**George Stathopoulos**

0403 053 836

george.s@lovere.com.au

8 Saxony Dv. Epping



**8 Saxony Drive**

## Epping, VIC

LOVE & CO