



32 Mihil Street Preston, VIC

3

1

2

All-Original And A Prized Corner Allotment

- Gas heating and ducted cooling
- Family bathroom and the convenience of two toilets
- Old fashioned family friendly eat in kitchen
- Two spacious living rooms
- Huge workshop with store room
- Deep, north facing rear yard

Price: \$1,376,000

A highly desirable corner position, a generous 719.4m2 allotment (approx) in a peaceful tree lined street an easy walk from the station, tram and all the delights of Plenty Road and High Street and a well maintained three bedroom home?harness these exciting elements and create a richly rewarding future in your own time. Explore the options of a subdivision, multi-home redevelopment or look to the current home to provide a brilliant and solid foundation for a full renovation (all STCA)



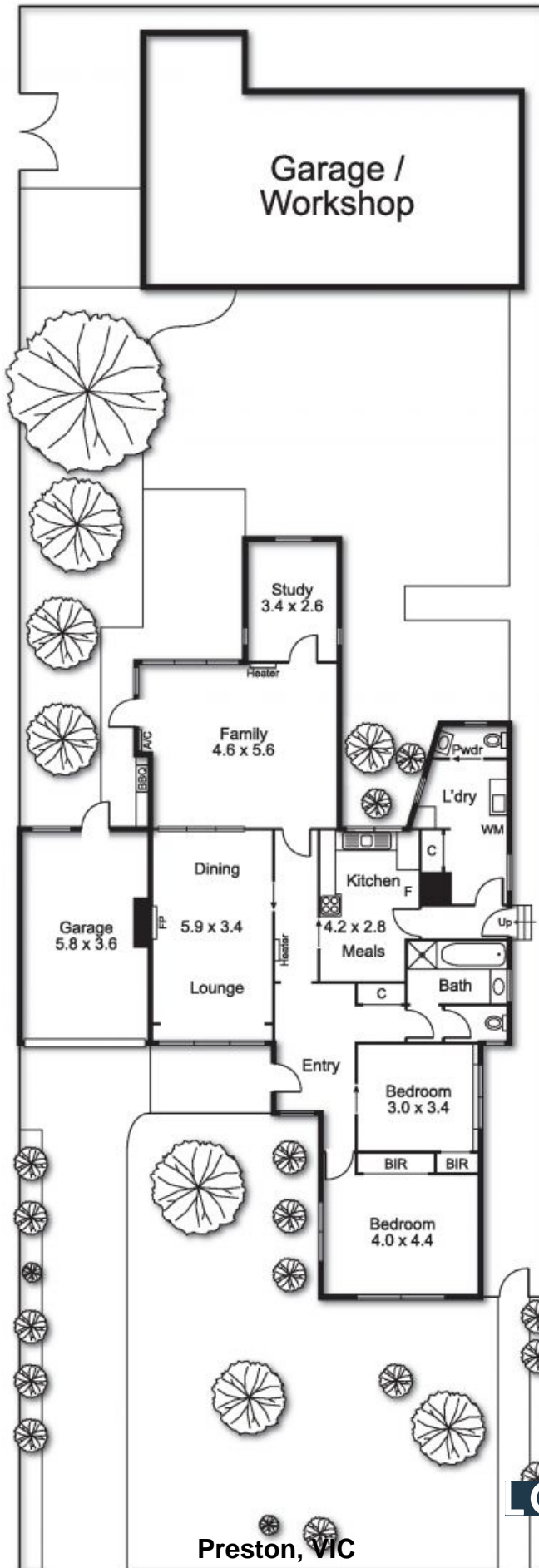
Graham Love

0418 534 450
graham.l@lovere.com.au



Graham Love

0418 534 450
graham.l@lovere.com.au



32 Mihil Street

Preston, VIC

