



9 Locksley Avenue Reservoir, VIC



### The Perfect Family Home

- Immaculate family home with original owners
- Sizeable 535m2 block (approx.)
- Three good sized bedrooms
- Large double lock up garage
- Undercover barbecue area

**Price:** \$775,000

This family home is ideally situated on a tree lined street in Reservoir, under 2km from Regent Station. Beautifully presented and much loved by the original owners, this home is a must to view.

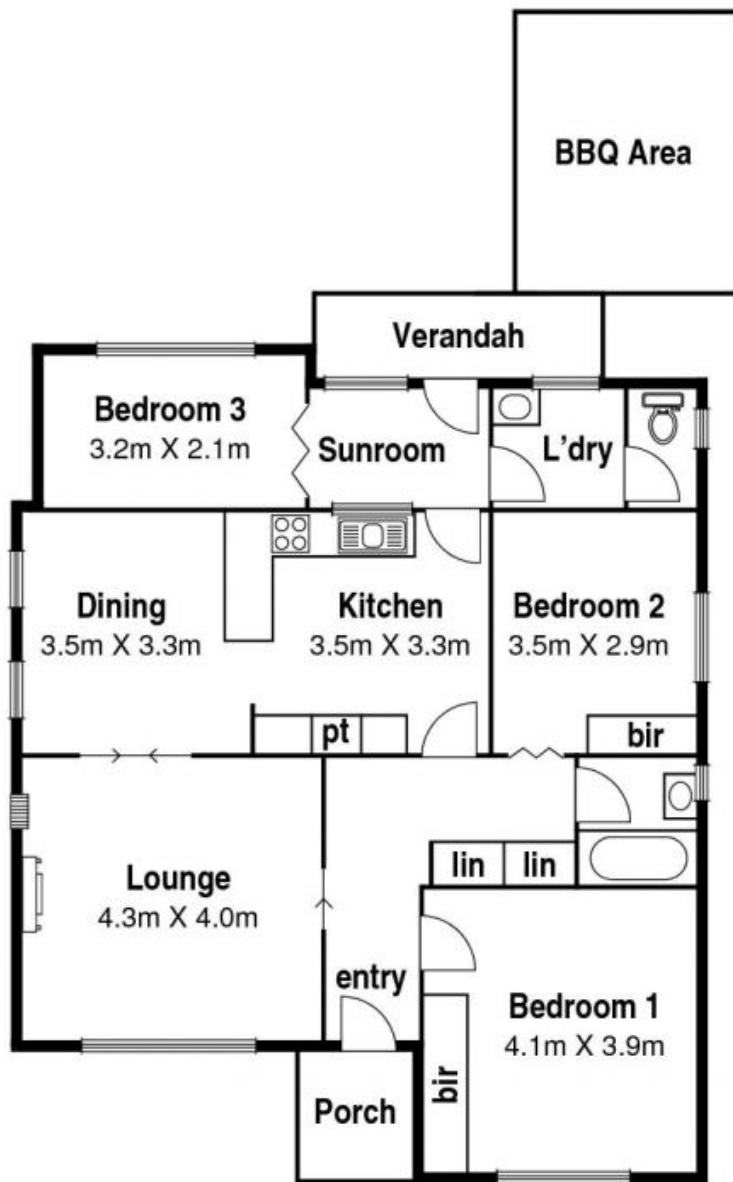
Due diligence checklist - for home and residential property buyers  
<http://www.consumer.vic.gov.au/duediligencechecklist>



**Love Reservoir**

reservoir@lovere.com.au

# 9 Locksley Ave. Reservoir



## Site Plan

