



2/24 Highland Street Kingsbury, VIC

1 1 1

## Huge Townhouse In A Location Meeting All Your Needs

Price: \$307,500

This immaculate two storey town residence is sure to impress with its generous size, quality fittings and fixtures and easy care indoor outdoor livability.

Close to every thing that counts, it is just moments from La Trobe Uni, Polaris shopping centre, Bundoora Park and the tram for the trouble free trip to the CBD.

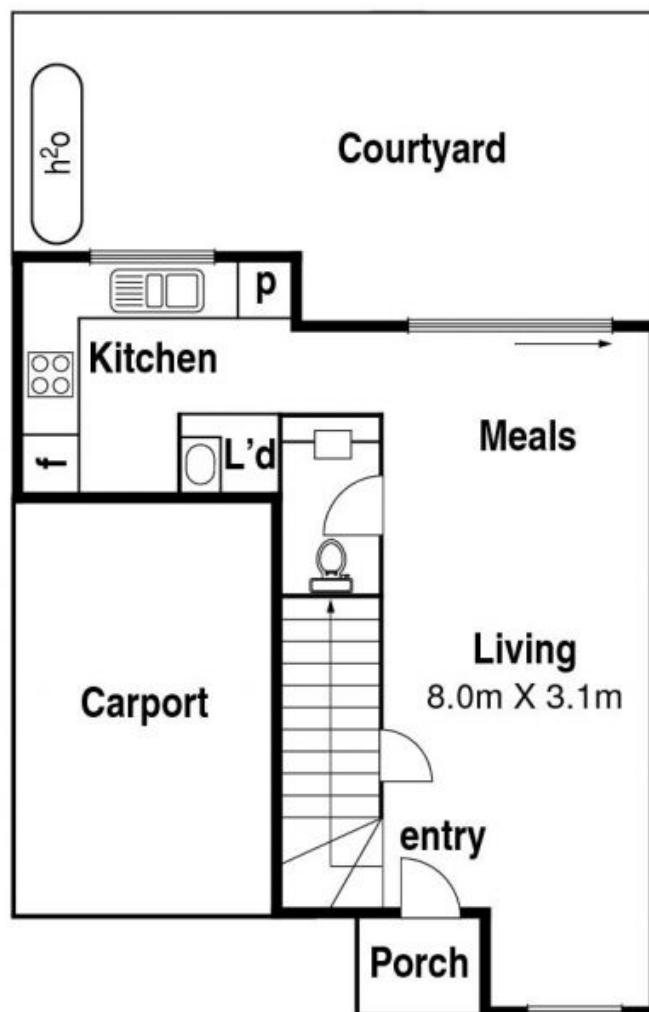
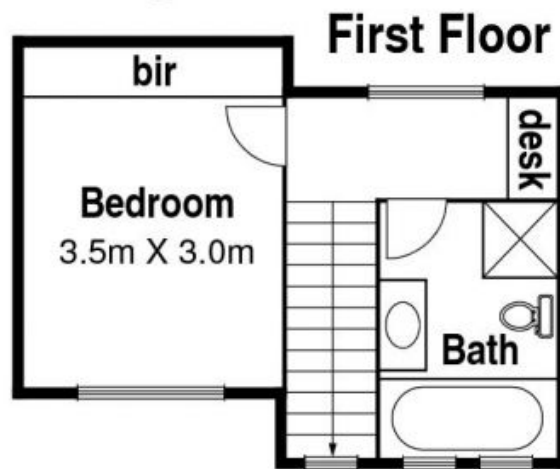
Graced with timber floors, floor-to-ceiling windows and sliding doors, light bright open plan living spaces include a Bosch equipped kitchen and slide seamlessly to an easy to manage combination of pavers and artificial turf, just perfect for entertaining, not maintaining.

LOVE & CO

Love Reservoir

reservoir@lovere.com.au

# 2/24 Highland St. Kingsbury



LOVE & CO