



50 Chauvel Street Reservoir, VIC



## The Options Are Endless. The Time To Act Is Now

Exceptional proportions, a peaceful neighbourhood and walking proximity to Ruthven Station, Edwardes Street's cafe's and shops and the bus nearby underpin the fabulous potential of this 55 year old, one owner home on a 787m2 allotment (approx).

Currently comfortable and certainly convenient, it delivers multiple options and an increasingly rare opportunity for an astute buyer.

Renovate and extend the existing three bedroom home and make it truly shine again, or be part of the area's rapidly evolving contemporary streetscape when you build a brand new dream residence (S.T.C.A).

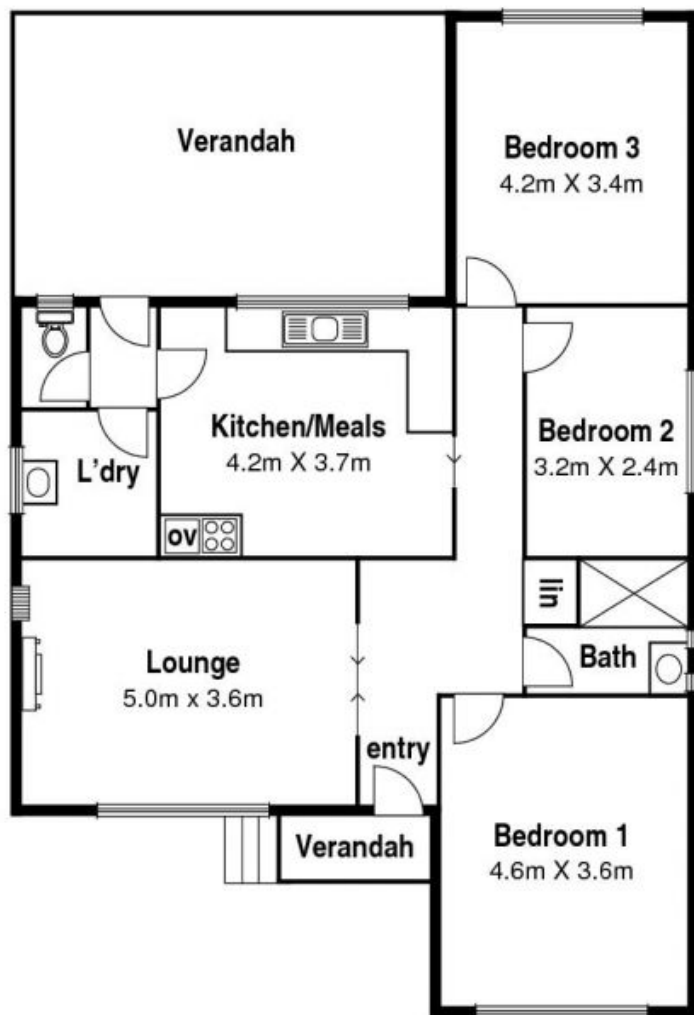
**Price:** \$522,500

LOVE & CO

**Love Reservoir**

reservoir@lovere.com.au

# 50 Chauvel St. Reservoir



Site Plan

