



66 Betula Avenue Bundoora, VIC



3



2



1

## When Position Is As Important As Presentation

Perfectly appointed for family living, this attractive home offers a fabulous blend of indoor and outdoor spaces. Top of the class for convenience, it is moments from the bus, and an easy walk from RMIT, University Hill and the tram for an easy trip to La Trobe Uni and onto the CBD.

Laid out for easy living, a stone and stainless steel kitchen separates spacious formal living dining from the equally generous family meals for easy entertaining. Outside, the living is just as easy with an expansive enclosed, undercover entertainment precinct that not only doubles the living space, but also provides a great place for the kids to play in the wet weather.

The main bedroom includes an updated ensuite, while the remaining two bedrooms share a contemporary bathroom. Gas heating, split system heating/cooling and a shed complementing the carport make this ideal to live in or let out.

**Price:** \$512,000

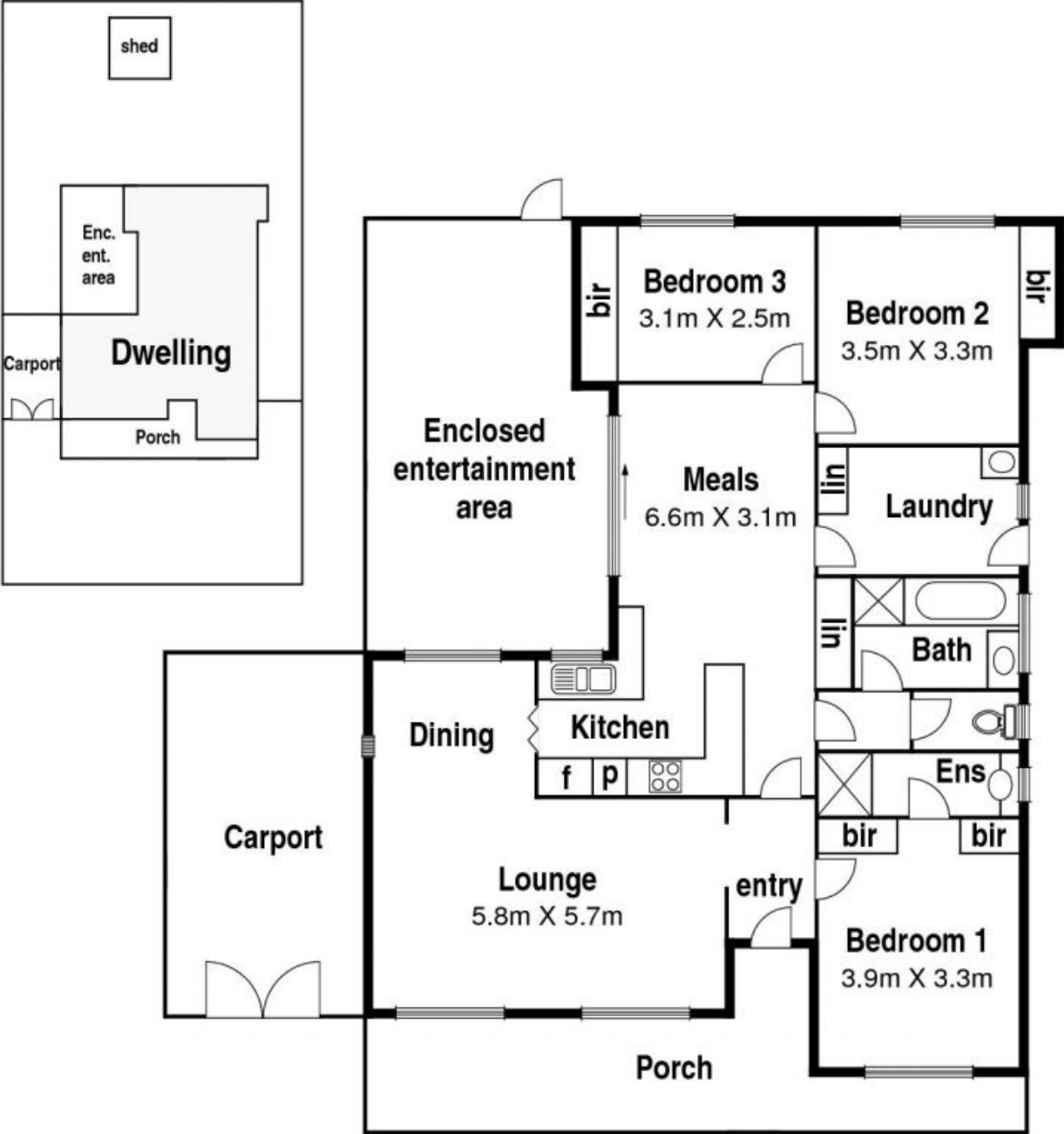
LOVE & CO

**Love Reservoir**

reservoir@lovere.com.au

# 66 Betula Ave. Bundoora

## Site Plan



LOVE & CO