



63 Shields Street Epping, VIC



4



2



2

Ready To Meet The Needs Of Modern Family Living

Style, size and sophistication come together to excite and entice discerning buyers looking to make this premium property in the sought-after Aurora Estate home.

Positioned for easy living, parks, early learning centre, supermarket, cafes and the primary school are all within a few minutes walk, drive or bike ride. Formal

lounge-dining complements family-living meals which includes a striking kitchen fitted with quality stainless steel appliances and a huge island bench. Sliding doors allow for seamless access to the first of the two alfresco areas. Sunny and bright, and perfect for morning coffee, it heads a pathway to the second entertainment area at the rear of the house. Paved, covered and with landscaped designer touches, this generous zone is ideal for large gatherings with family and friends, all year round.

Price: \$600,000 - \$660,000

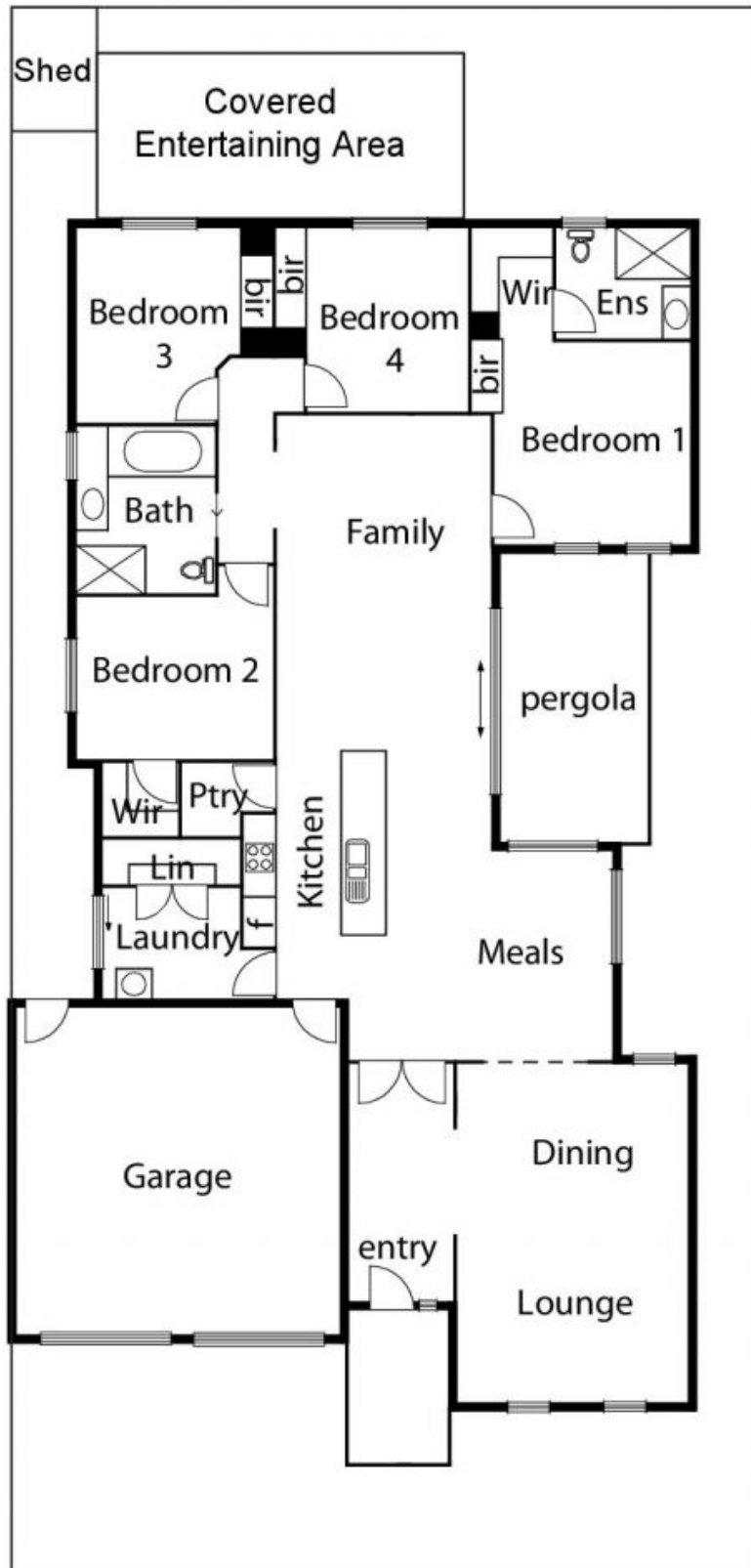


George Stathopoulos & **Jim Kalakias**

0403 053 836
george.s@lovere.com.au

0402 177 336
jim.k@lovere.com.au

63 Shields. St Epping



63 Shields Street Epping, VIC

The information contained herein has been obtained through sources deemed to be reliable but cannot be guaranteed to be accurate. Any information of special importance should be obtained through independent verification.