



25 Pommel Crescent Epping, VIC



Family Living With An Alfresco Focus

A superb landscaped garden delivering summer shade, winter sun and year-round colour complements the perfect presentation of this three bedroom home designed around an absolutely superb alfresco focus.

Inside you'll discover a spacious living room under cathedral ceilings, family meals overlooked by a timber kitchen and three bedrooms including main enjoying the ensuite convenience of direct access to the main bathroom. Ducted heating and cooling, wood fire heater and air-conditioner cover all bases for year round comfort.

A huge decked area complete with a Bali Hut delivers fabulous outdoor entertainment spaces, while linking the house to an air-conditioned teen retreat/studio/home office.

The multi vehicle carport, secure behind an auto door, complements a garage with fitted work bench and mezzanine storage.

Price: \$550,000 - \$595,000

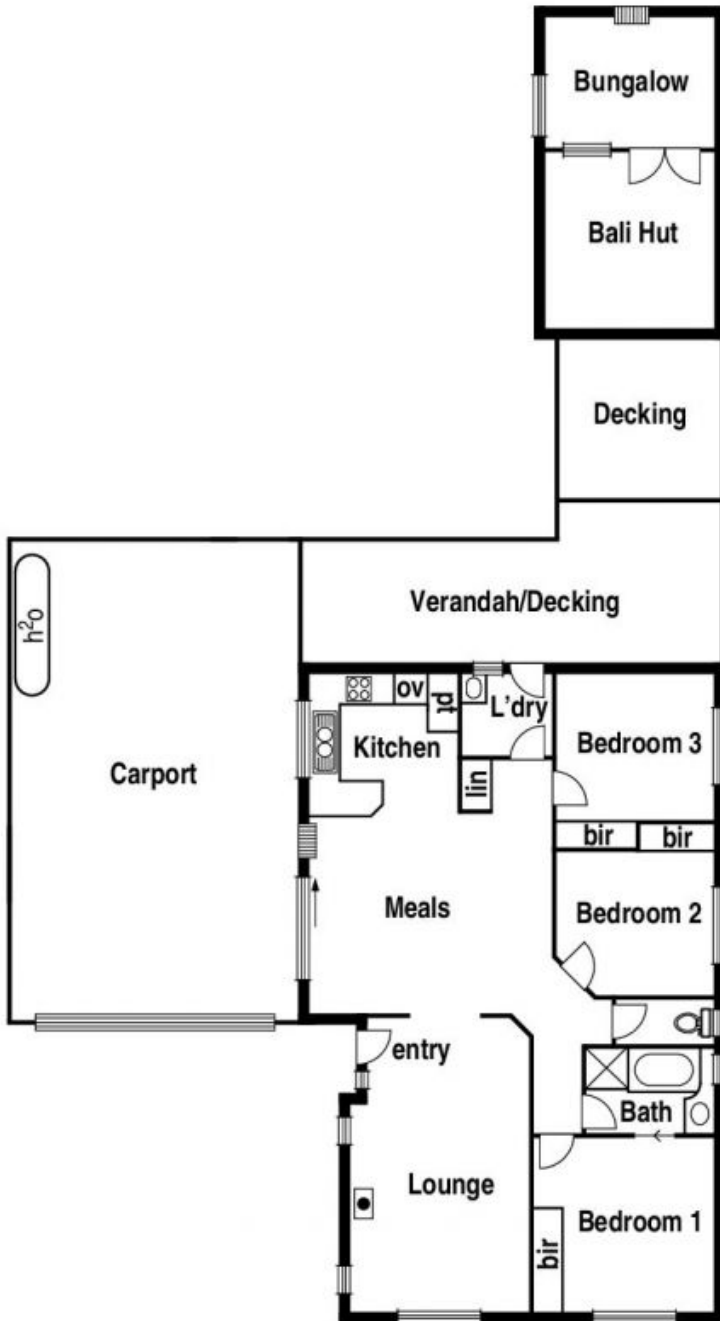


Jim Kalakias
0402 177 336
jim.k@lovere.com.au

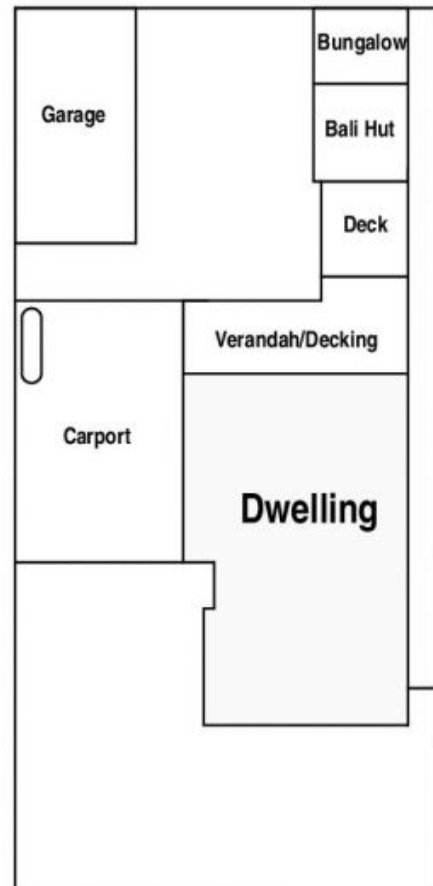


George Stathopoulos
0403 053 836
george.s@lovere.com.au

25 Pommel Crescent, Epping



Site Plan



The information contained herein has been obtained through sources deemed to be reliable but cannot be guaranteed.

25 Pommel Crescent Epping, VIC

LOVE & CO