



5 Saratoga Walk Epping, VIC



3



2



2

Unique Park Side Ambience

Set Negotiation: Monday 8th June at 6.00pm (Unless Sold Prior)

Price:

Contact Agent

It's easy to see why the location of this premium, easy care property is much sought after. Moments to schools, shops, cafes and Epping Plaza, there's the easy going ambience of the Mediterranean themed "Olive Grove" within the Lydrarum Estate, and Gaudi Park at the front, delivering a relaxed outlook.

The lower level, with easy access from both Saratoga Walk and Salvador Drive introduces a study area, powder room and an open plan living meals that stretches the full width of the house and includes an easy to work in kitchen with stainless steel appliances. Upstairs opens to the family bathroom and three bedrooms including main with ensuite, walk in robe and balcony with a park.



Jim Kalakias

0402 177 336

jim.k@lovere.com.au



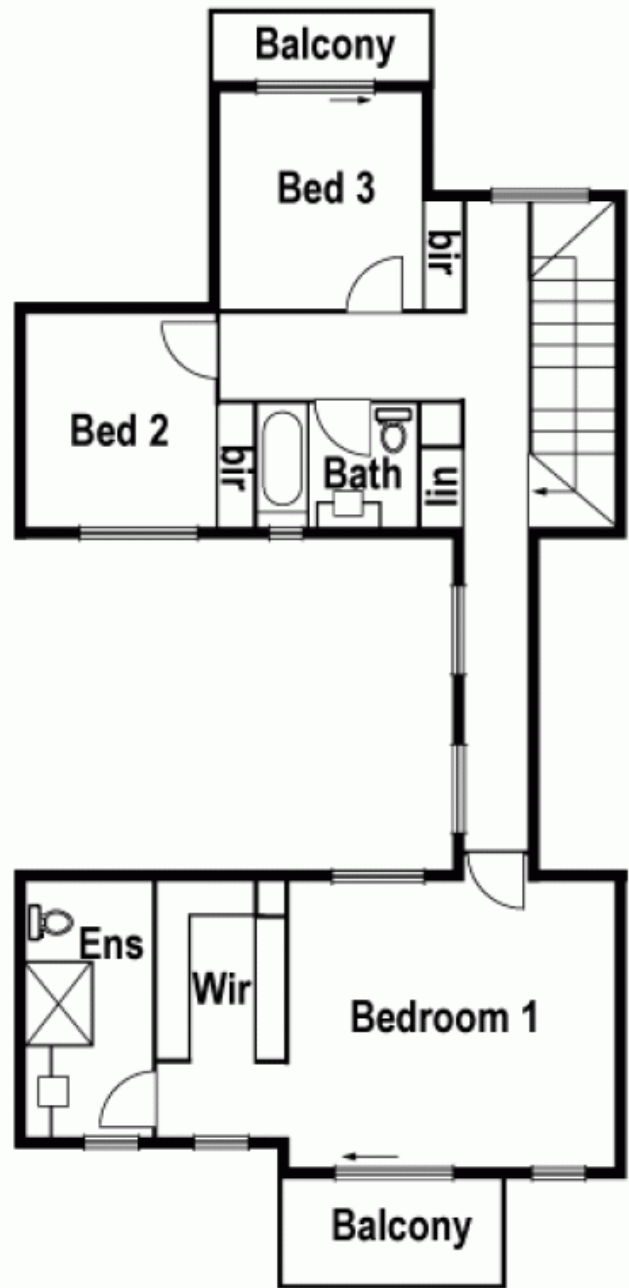
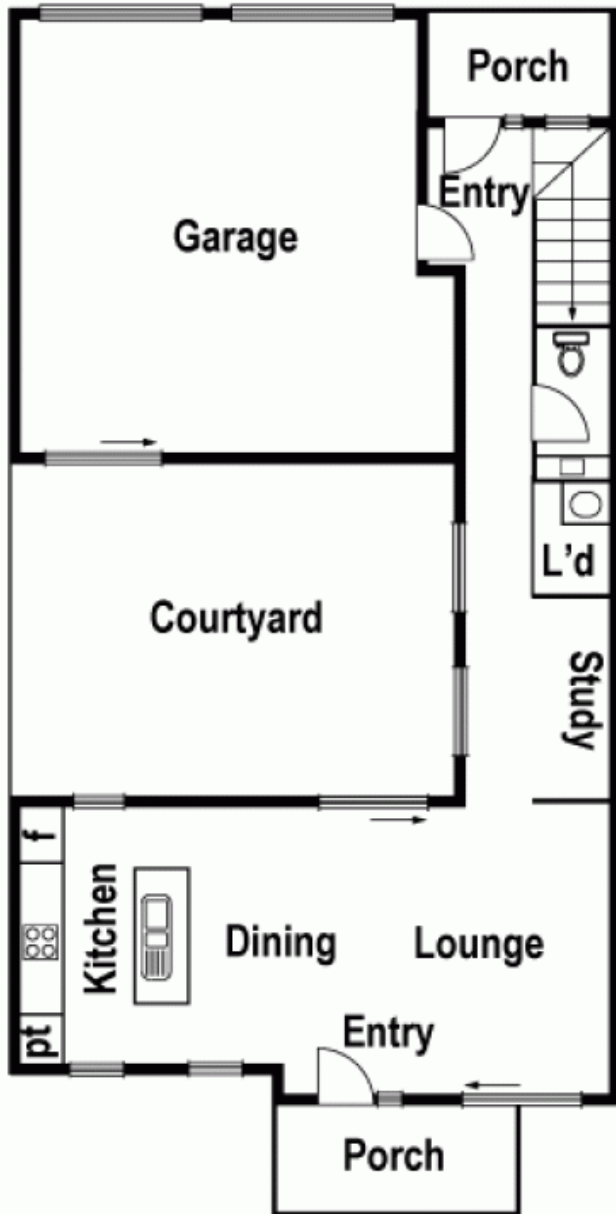
George Stathopoulos

0403 053 836

george.s@lovere.com.au

5 Saratoga Walk, Epping

First Floor



LOVE & CO