



14/48 Cooper Street Epping, VIC

3

1

1

### Invest Now, Nest Later

Leased until 9th December 2015 and returning \$1,369.00 pcm, this perfectly positioned town house will deliver an income stream from the moment you take possession!

Just 500 metres from the station in one direction, 500 metres from the Epping Plaza in the other, and closer still to the wide choice of eateries on High Street, it is set well back from the road for peace and privacy.

Cleverly laid out to ensure easy zoned living and accommodation spaces, the lower level introduces powder room, laundry, large lounge room and a separate open plan family meals that includes a kitchen offering stainless steel appliances, and opens to a low maintenance, north facing courtyard.

Head up the carpeted stairs to discover plenty of accommodation with three double bedrooms sharing the family bathroom. A garage and ducted heating round out the perfect investment package.

**Price:** \$315,000



**Jim Kalakias**

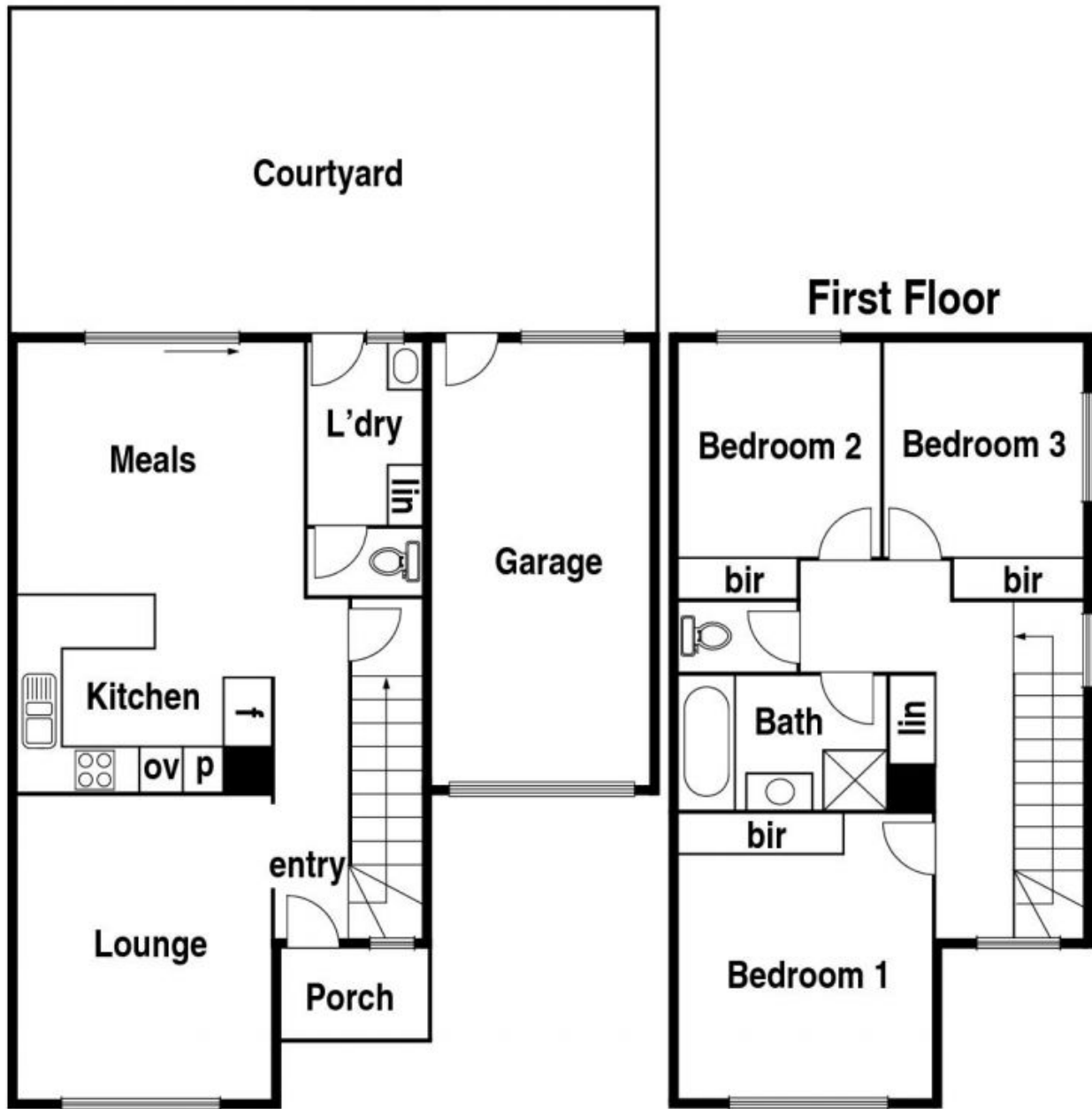
0402 177 336  
jim.k@lovere.com.au



**Bijan Rahimi**

0451 515 301  
bijan.r@lovere.com.au

# 14/48 Cooper St. Epping



**LOVE & CO**